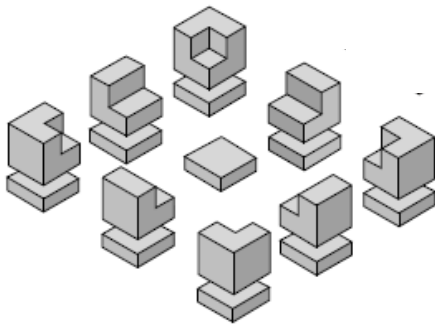


# INSTALLATION AND SPECIFICATION PAGE FOR FIRE ROCK FIRE PIT

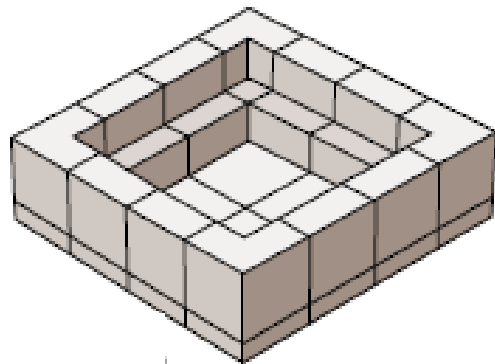
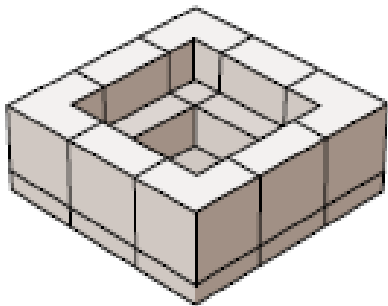
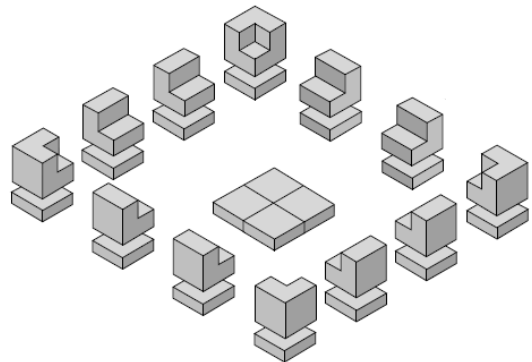
## Site Preparation:

- Generally, a concrete pad 4 – 6 inches thick with footings as dictated by local building codes, is the best surface on which to erect any fire feature.
- With proper ground preparation, such as the gravel and sand layering under a paver patio, a Fire Rock Fire Pit may be installed without a concrete foundation.
- If it is your intention to install this product on a combustible surface (wooden deck), take extra precautions to insulate the surface under and surrounding the Fire Pit so that neither heat transference nor sparks present a hazard.

36" Fire Pit



48" Fire Pit



Each surface connecting with another surface must be generously covered with Fire Rock Adhesive Mortar.



**F I R E R O C K**  
B U I L D I N G   M A T E R I A L S

**FireRock Building Materials**

**205.639.5000**

**Toll Free: 888.876.1025**

**Fax: 888.886.3473**

MANUFACTURING:

3620 AVENUE C

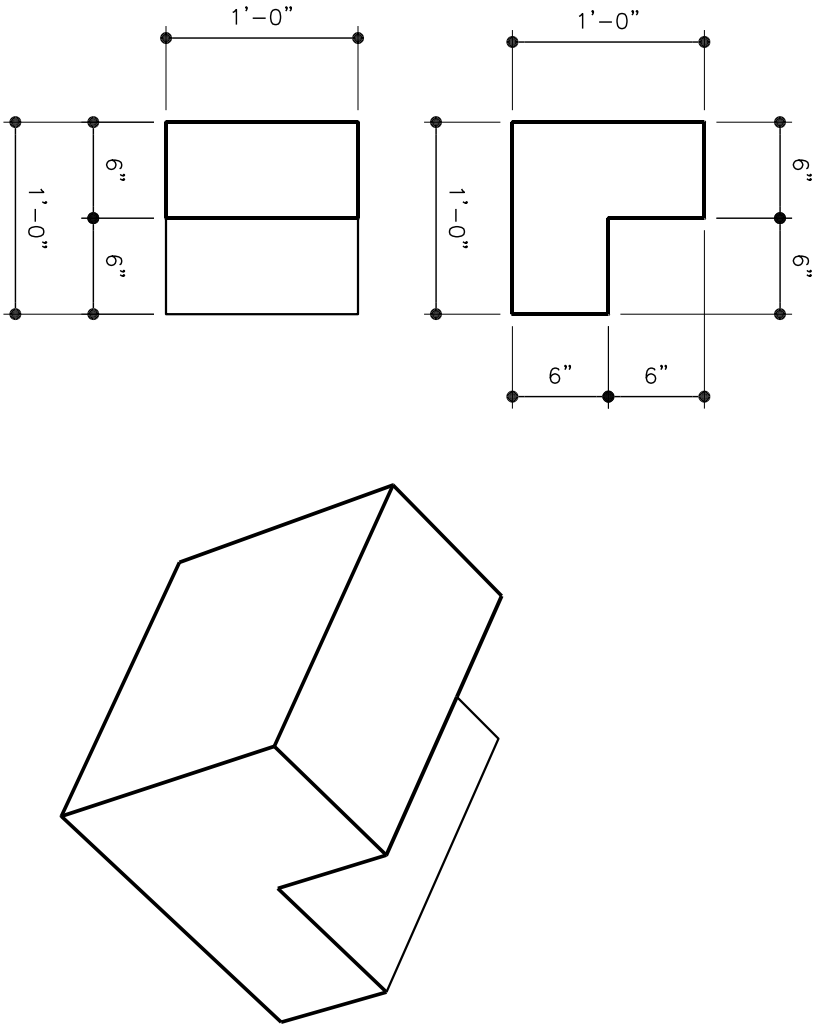
FAIRFIELD, AL 35064

ADMINISTRATIVE:

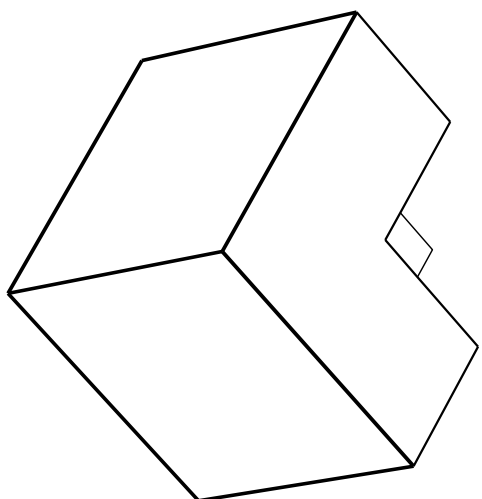
1500 1st AVENUE N, #75

BIRMINGHAM, AL 35203

#	COMPONENT NAME
1	BASE BLOCK
2	CORNER BLOCK
3	INTERIOR BLOCK
4	CORNER BLOCK (opposite side)



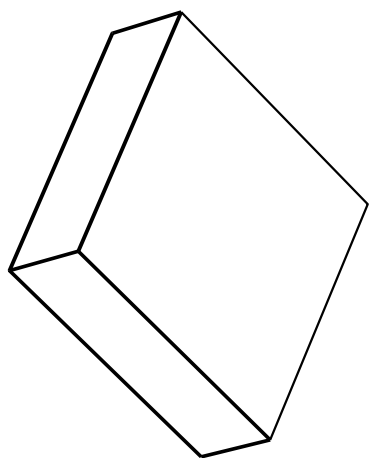
INTERIOR BLOCK



OPPOSITE CORNER BLOCK

4

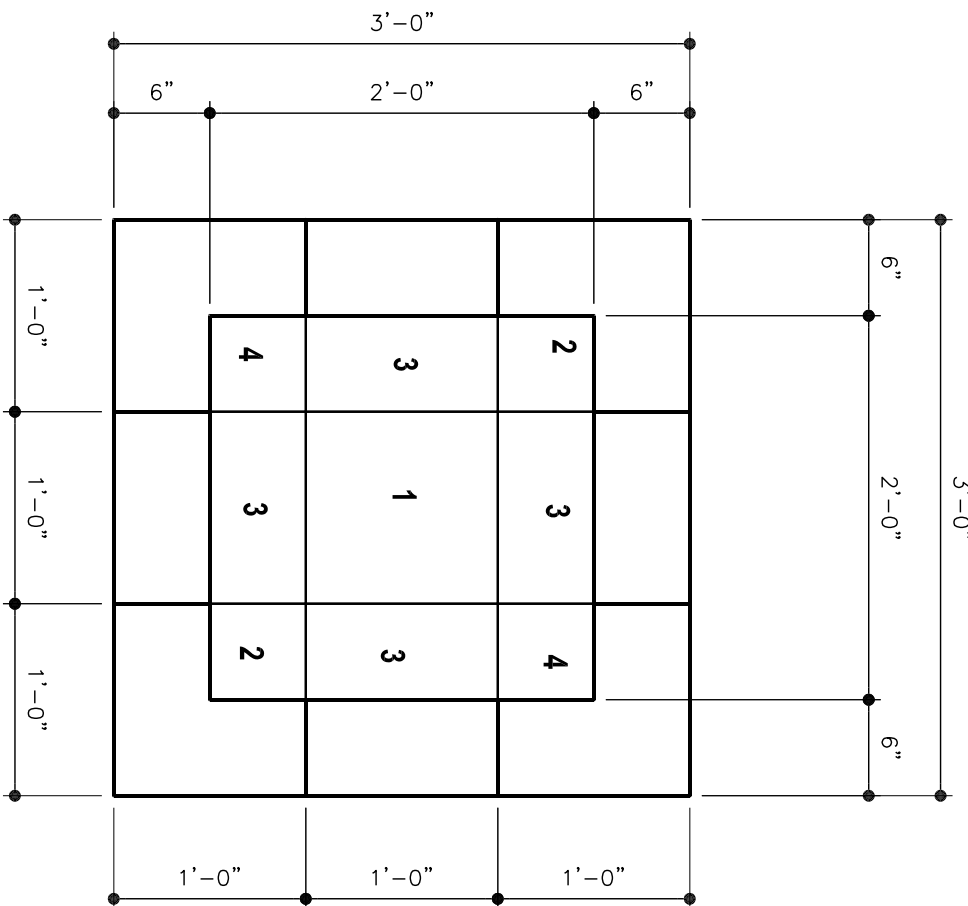
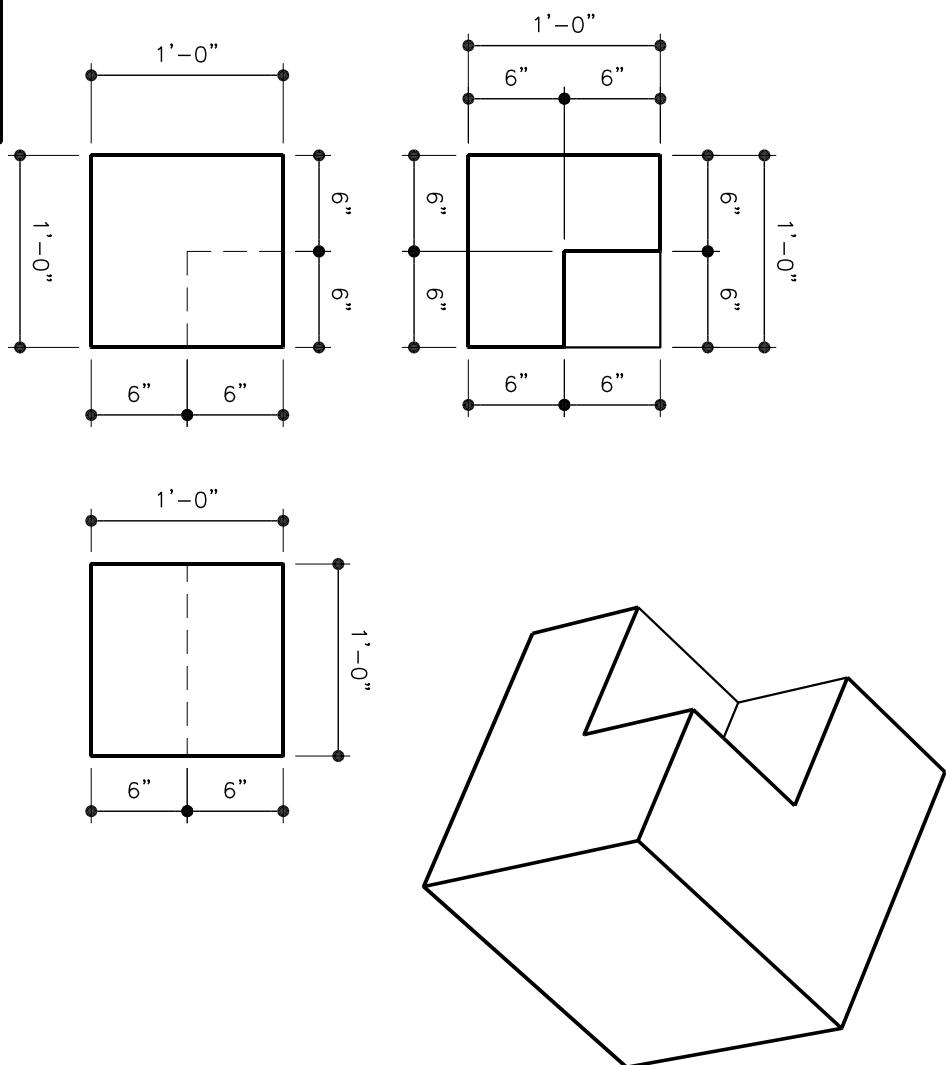
SEE CORNER BLOCK #2 DIMENSIONS



BASE BLOCK

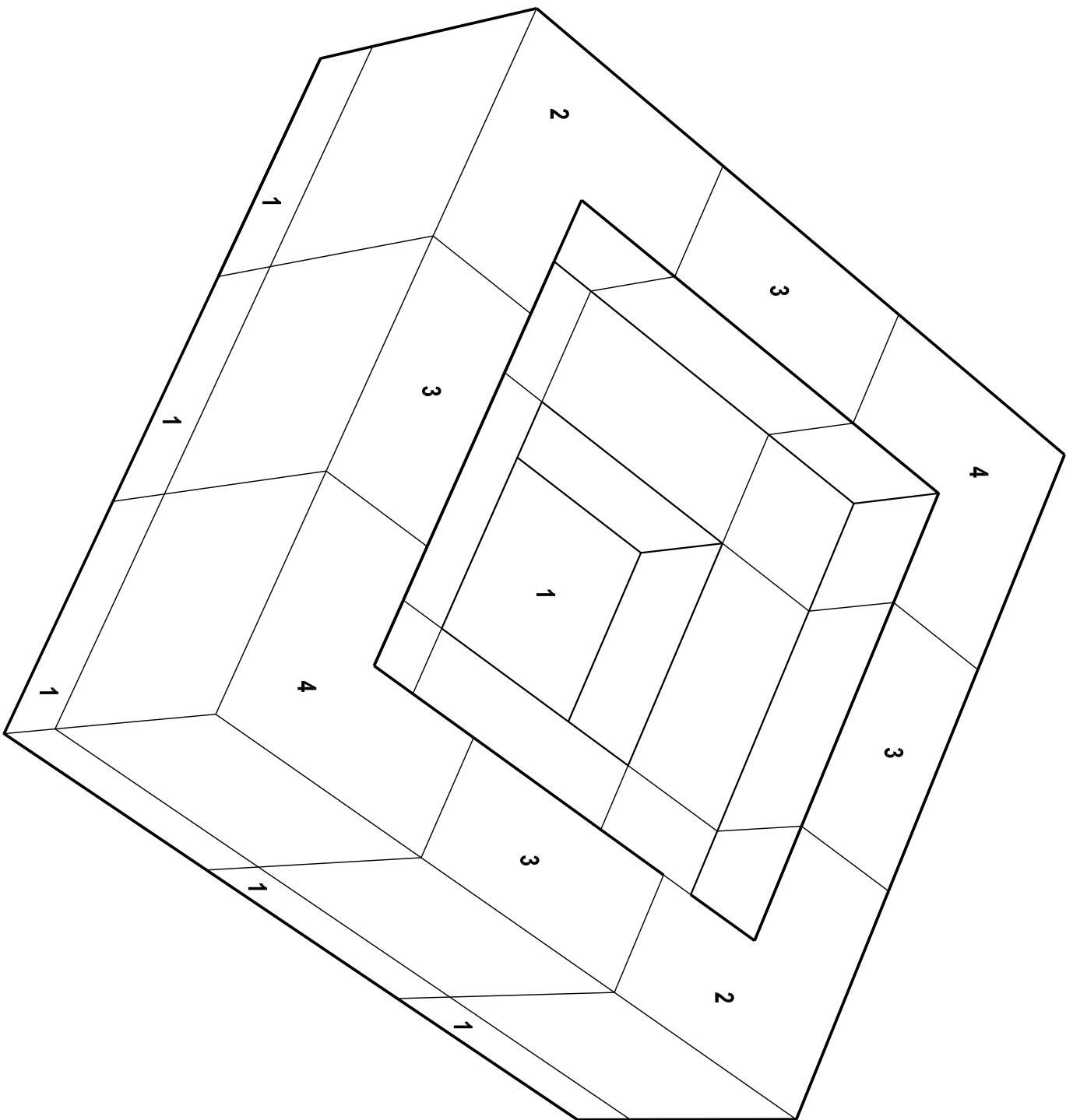
2

CORNER BLOCK

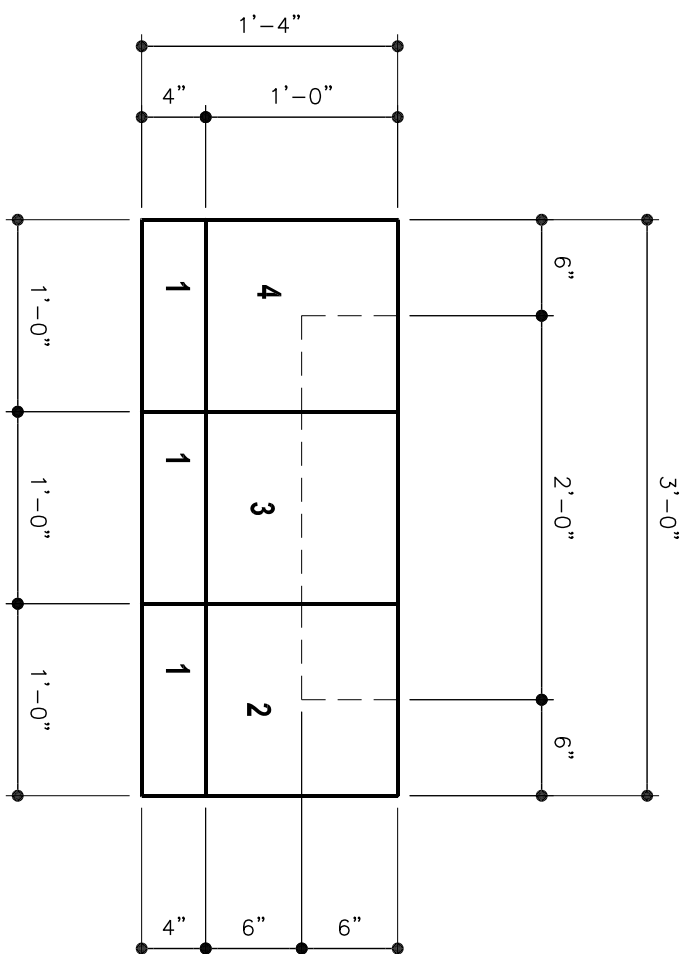


FIRE PIT PLAN

SCALE: 1" = 1'-0"

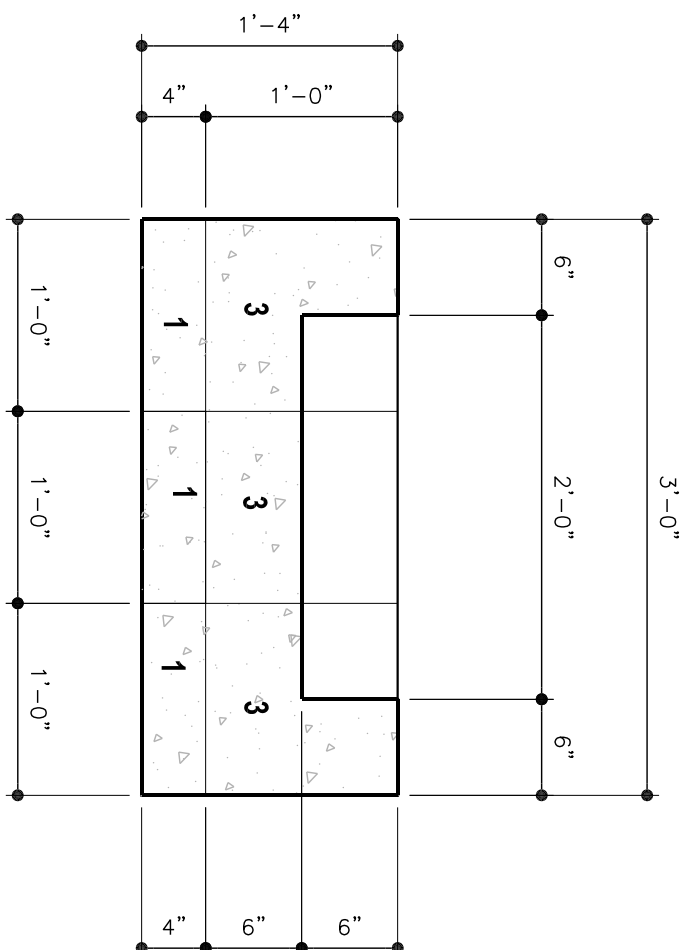


ISOMETRIC



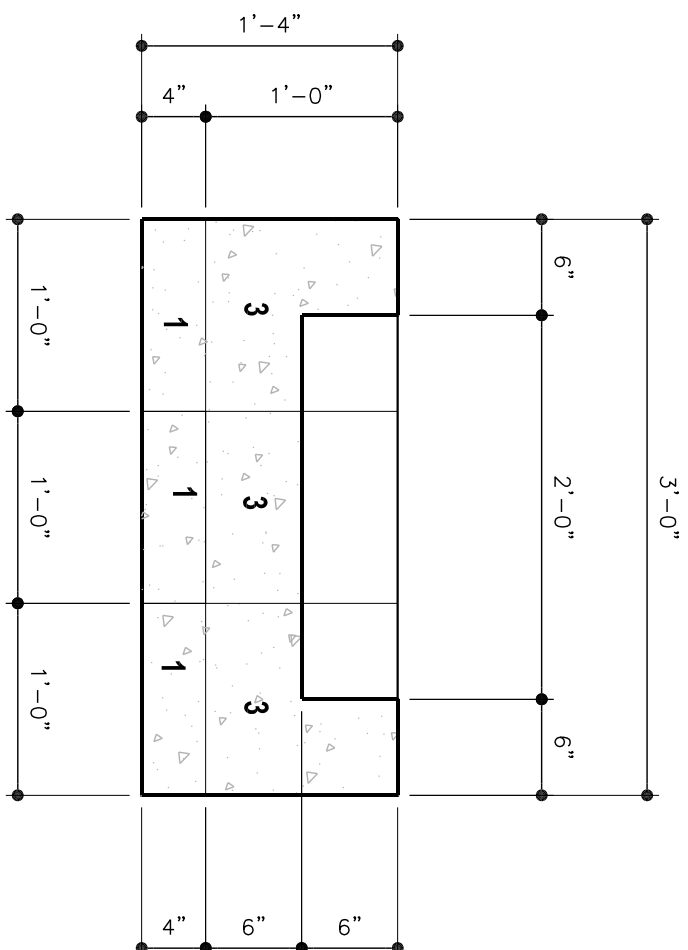
FIRE PIT ELEVATION

SCALE: 1" = 1'-0"



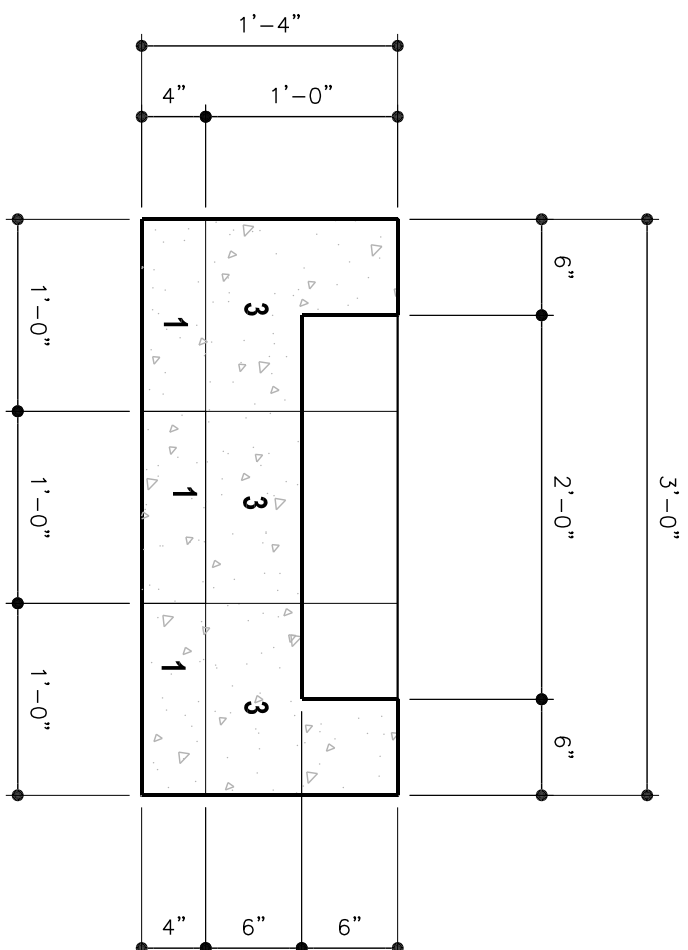
FIRE PIT SECTION

SCALE: 1" = 1'-0"



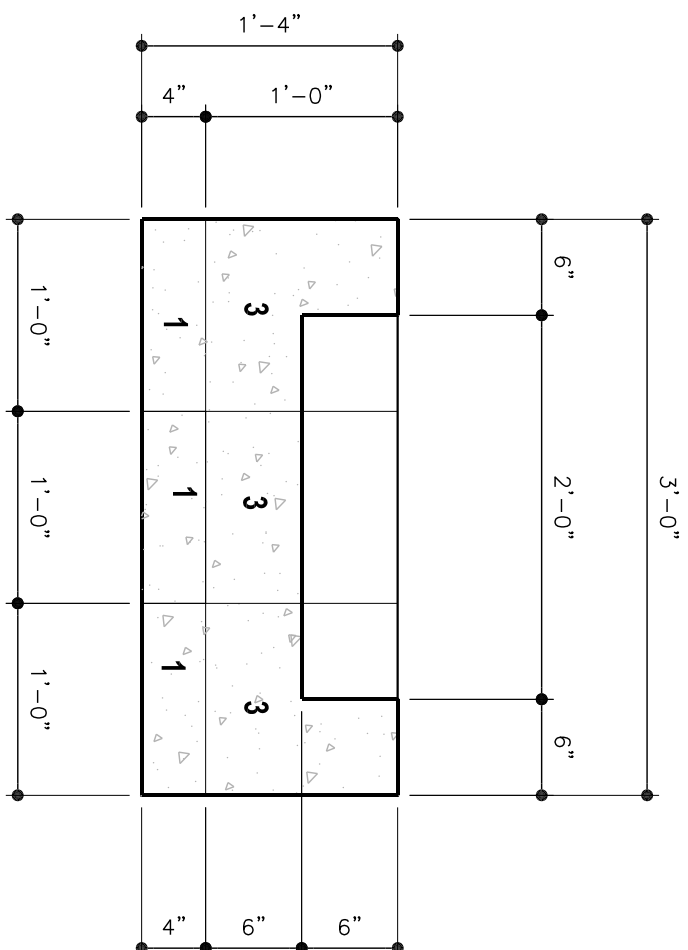
FIRE PIT SECTION

SCALE: 1" = 1'-0"



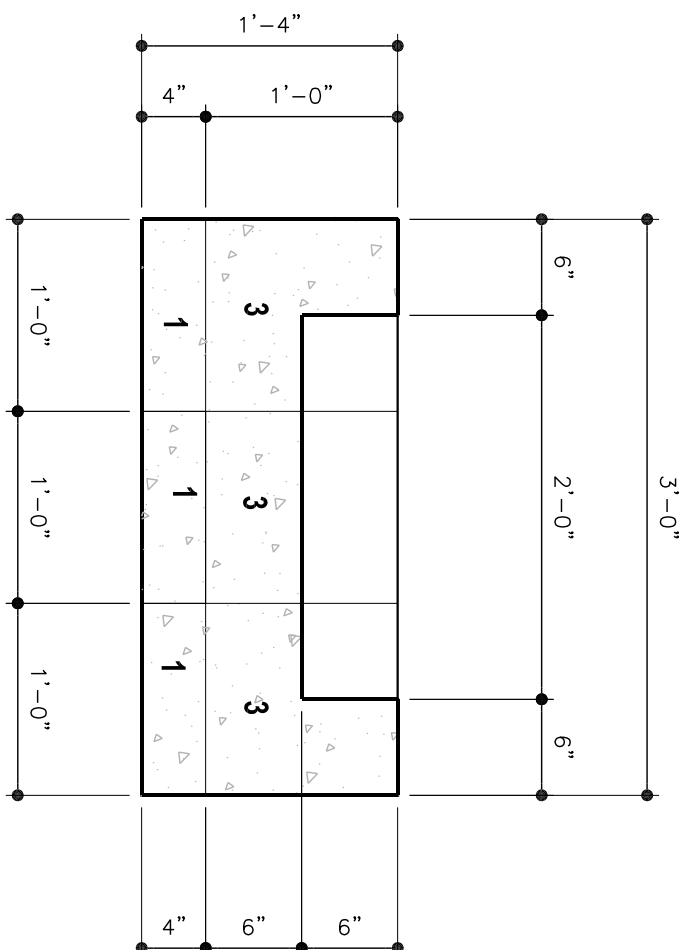
FIRE PIT SECTION

SCALE: 1" = 1'-0"



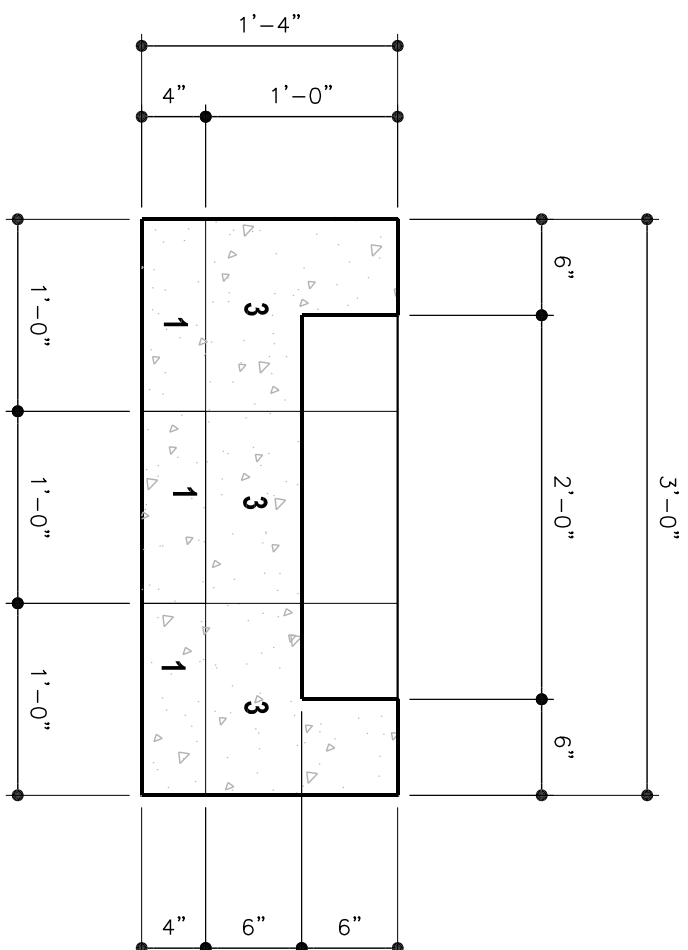
FIRE PIT SECTION

SCALE: 1" = 1'-0"



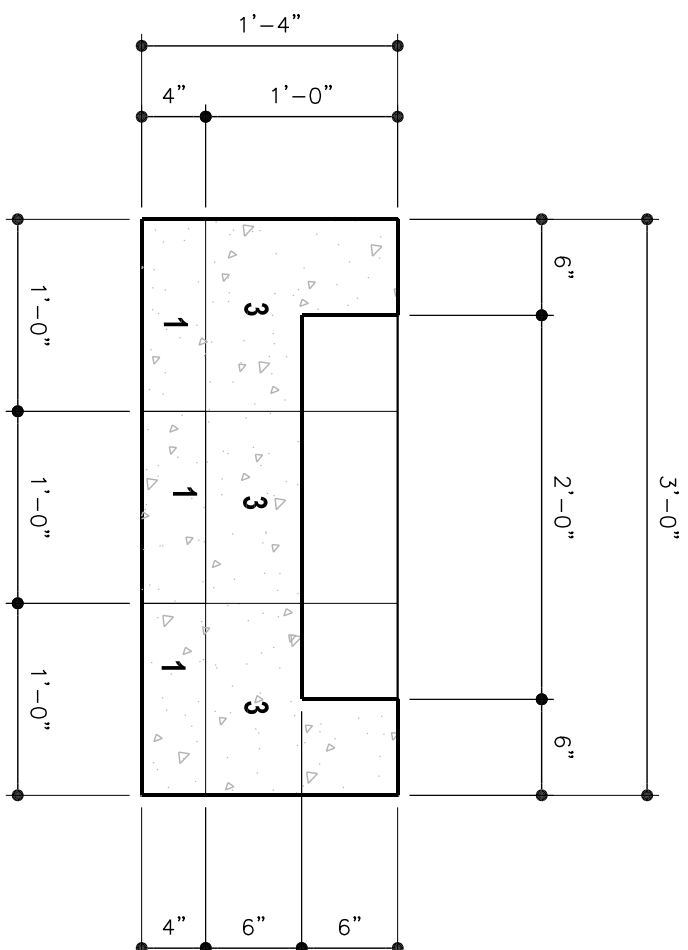
FIRE PIT SECTION

SCALE: 1" = 1'-0"



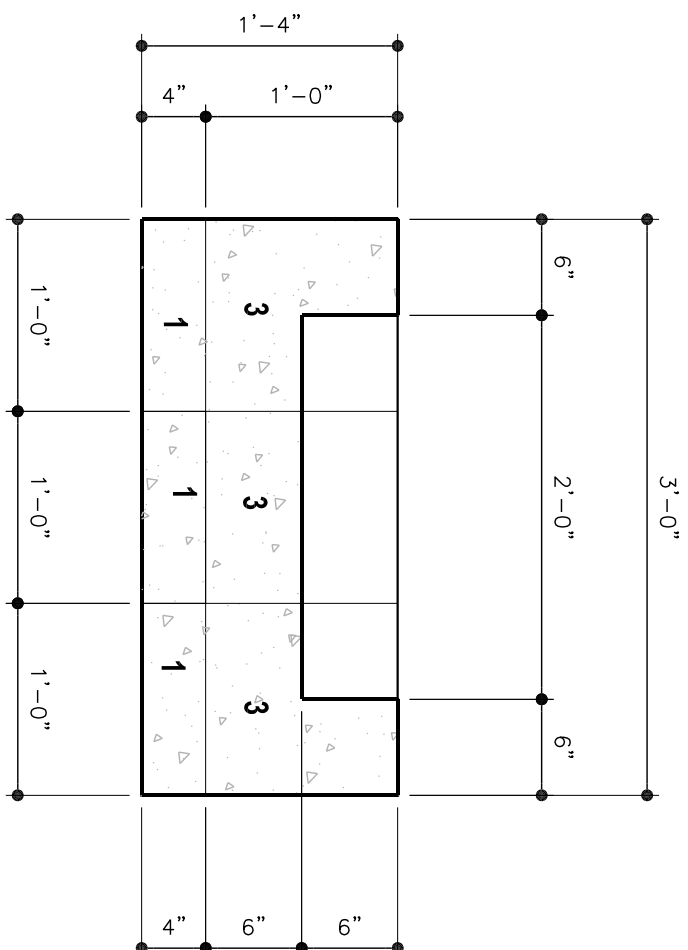
FIRE PIT SECTION

SCALE: 1" = 1'-0"



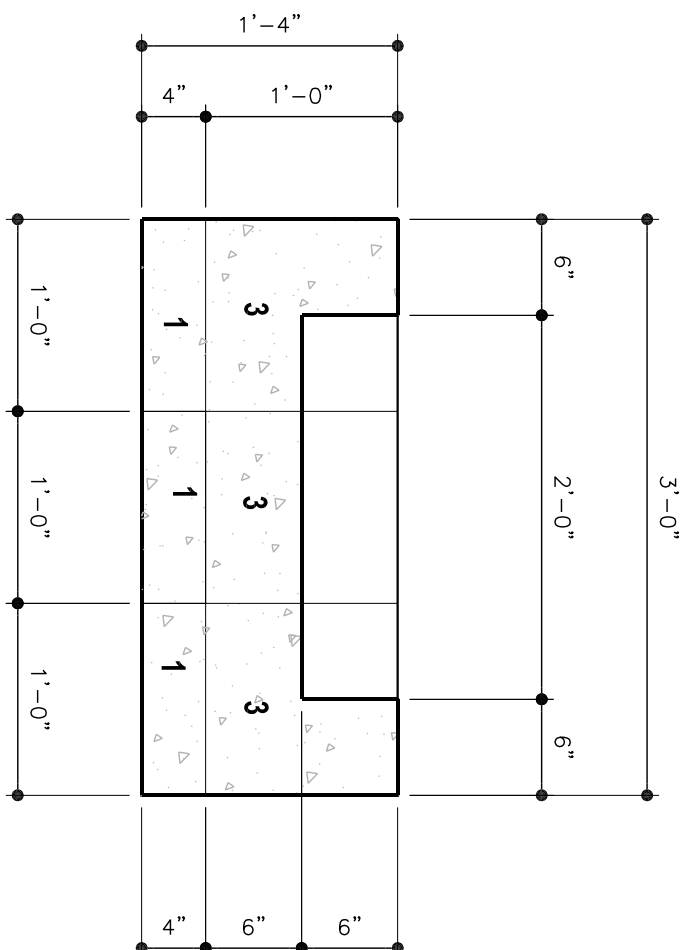
FIRE PIT SECTION

SCALE: 1" = 1'-0"



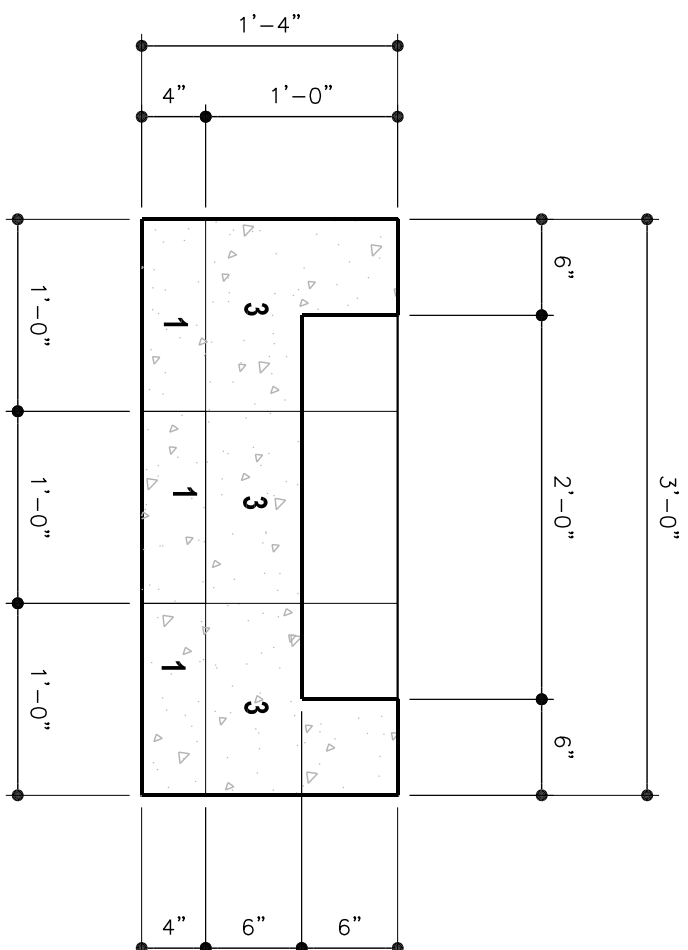
FIRE PIT SECTION

SCALE: 1" = 1'-0"



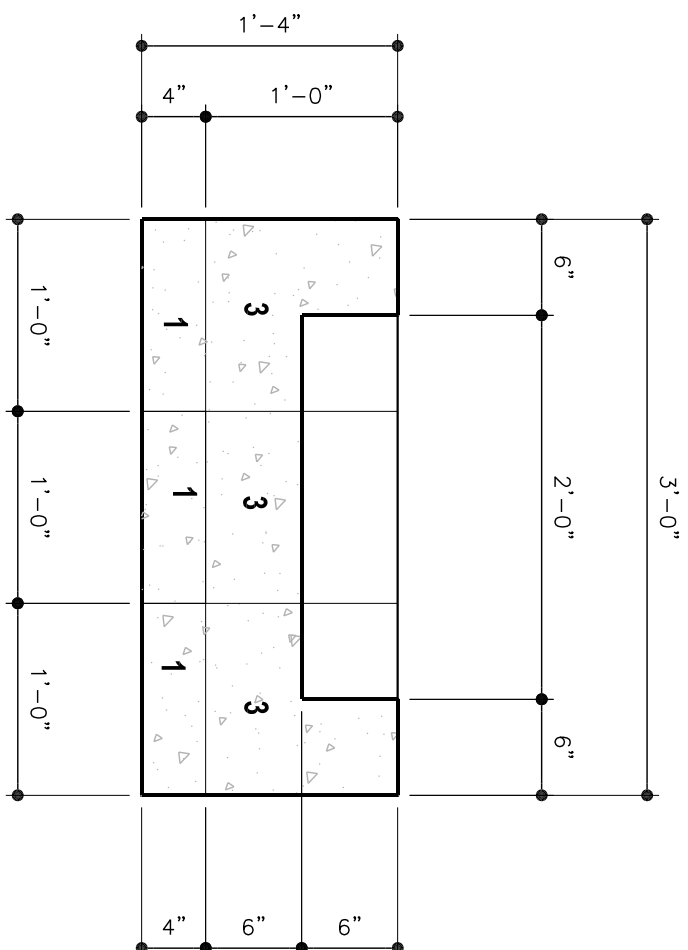
FIRE PIT SECTION

SCALE: 1" = 1'-0"



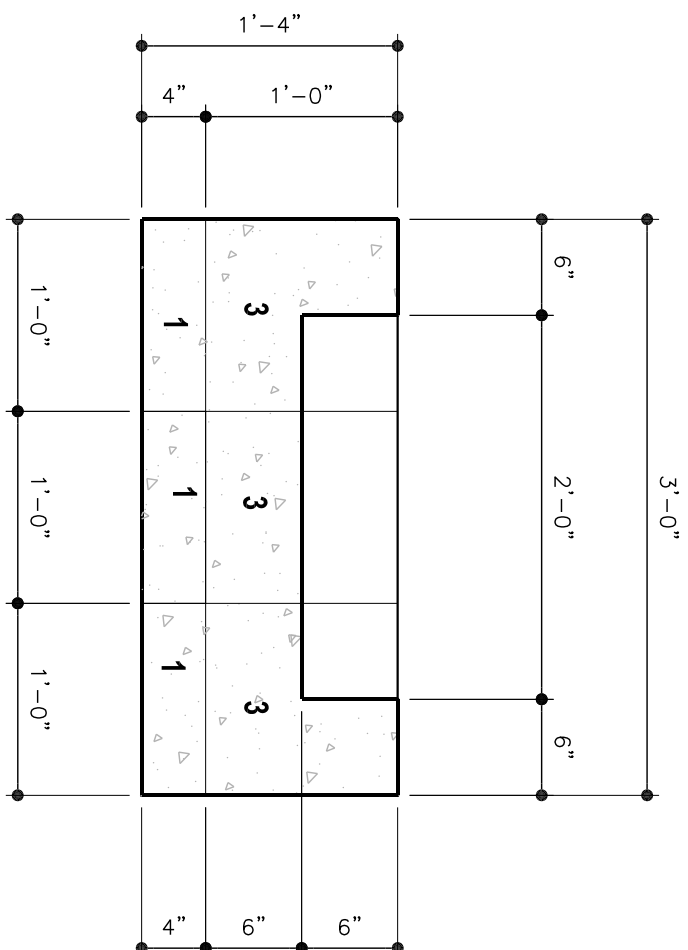
FIRE PIT SECTION

SCALE: 1" = 1'-0"



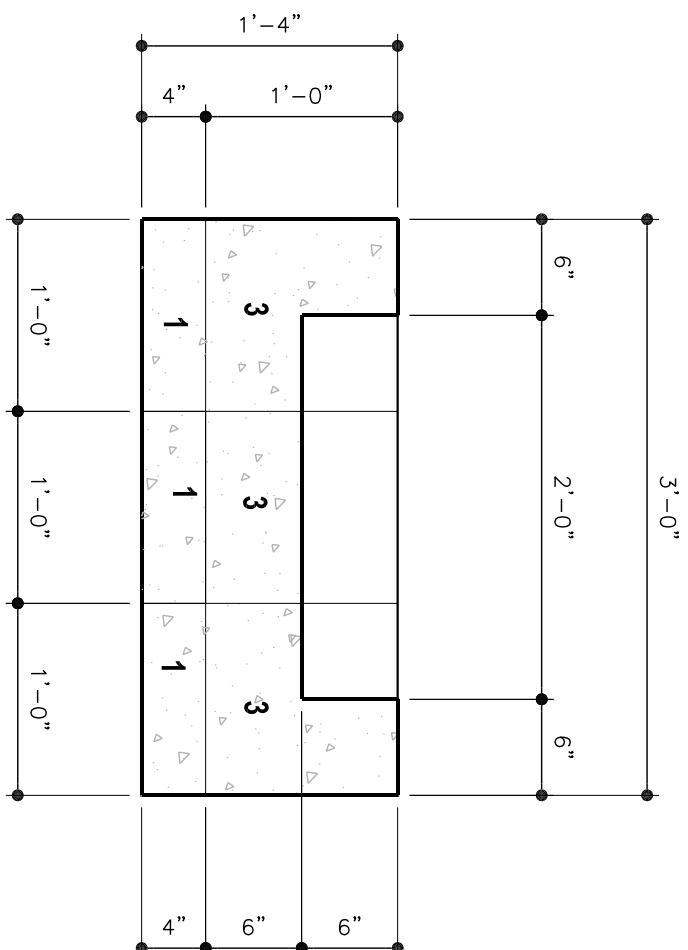
FIRE PIT SECTION

SCALE: 1" = 1'-0"



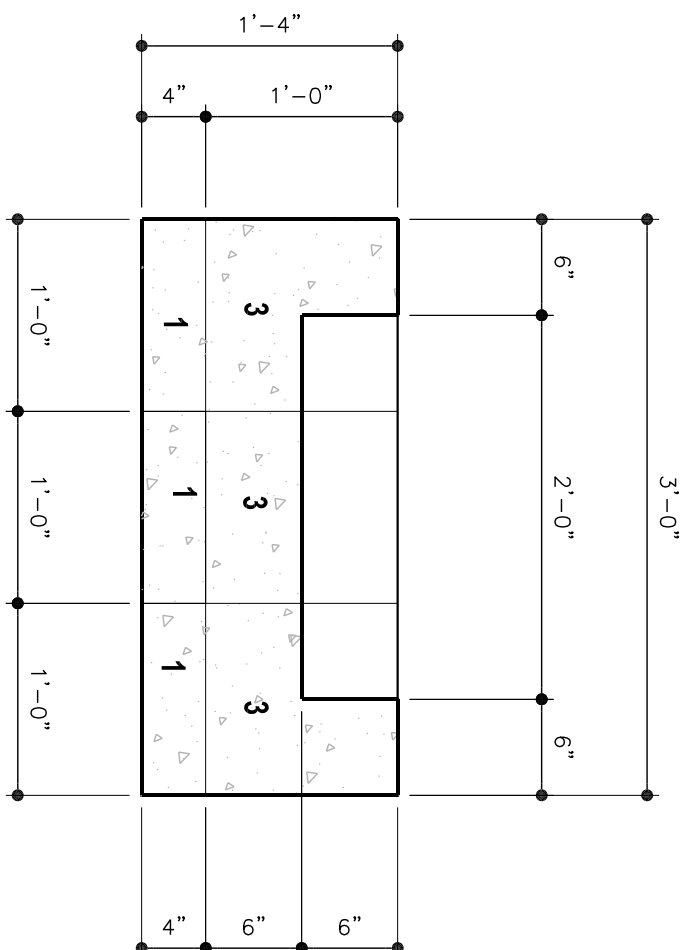
FIRE PIT SECTION

SCALE: 1" = 1'-0"



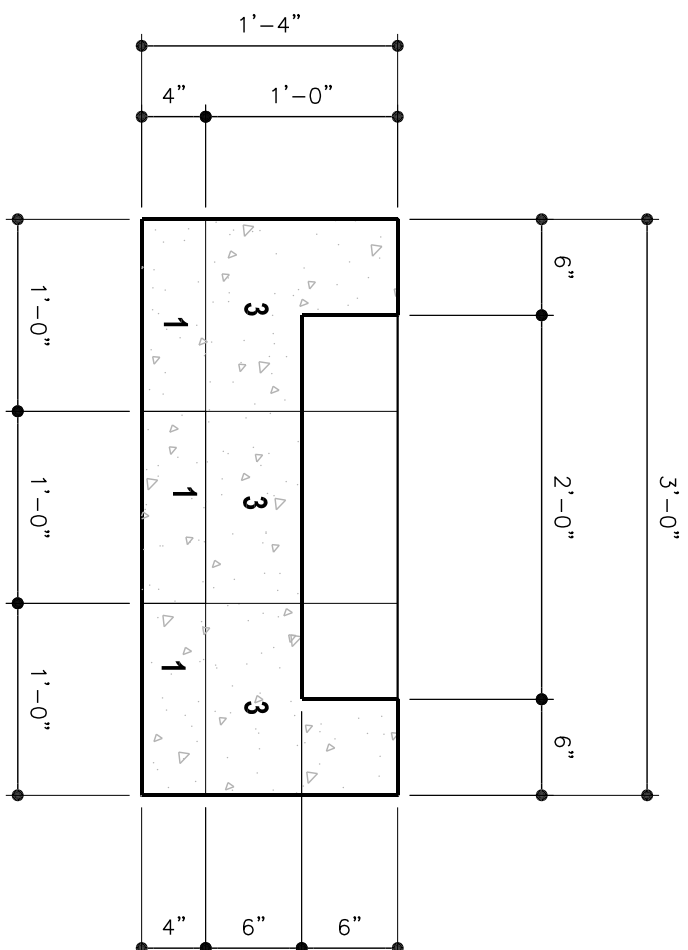
FIRE PIT SECTION

SCALE: 1" = 1'-0"



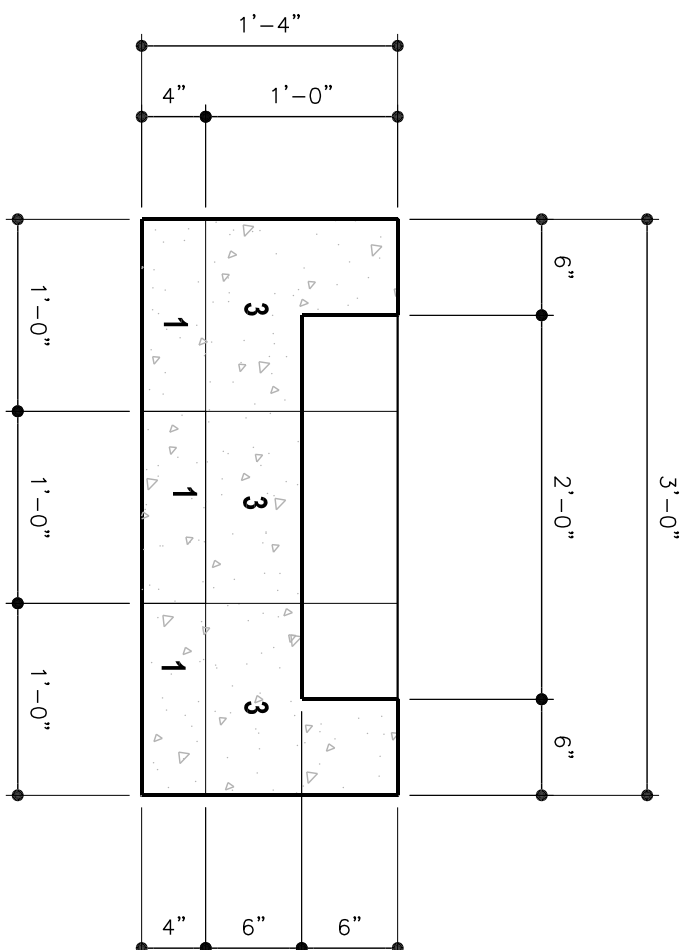
FIRE PIT SECTION

SCALE: 1" = 1'-0"



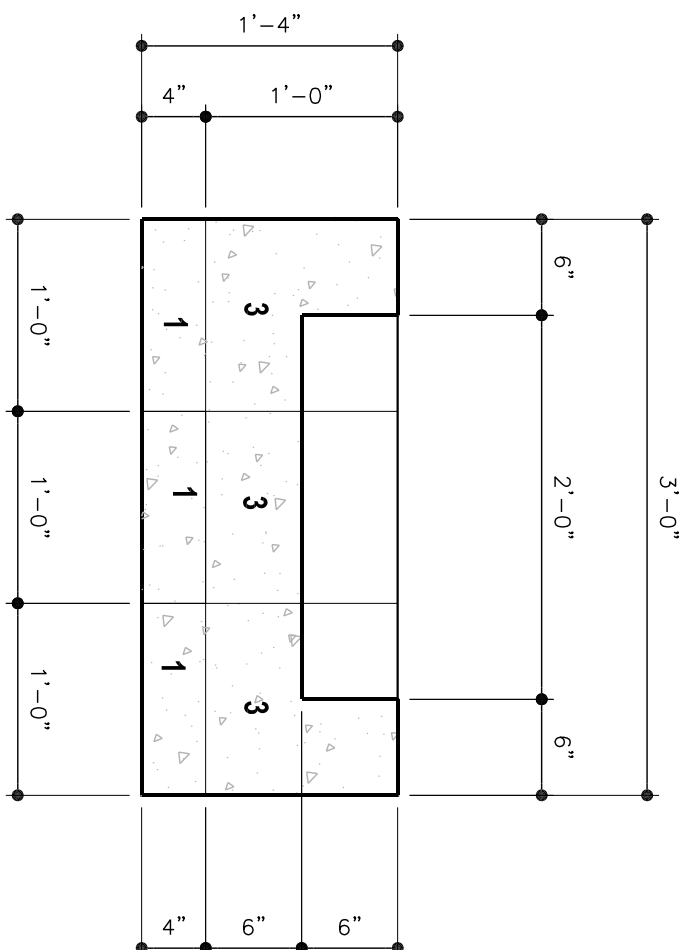
FIRE PIT SECTION

SCALE: 1" = 1'-0"



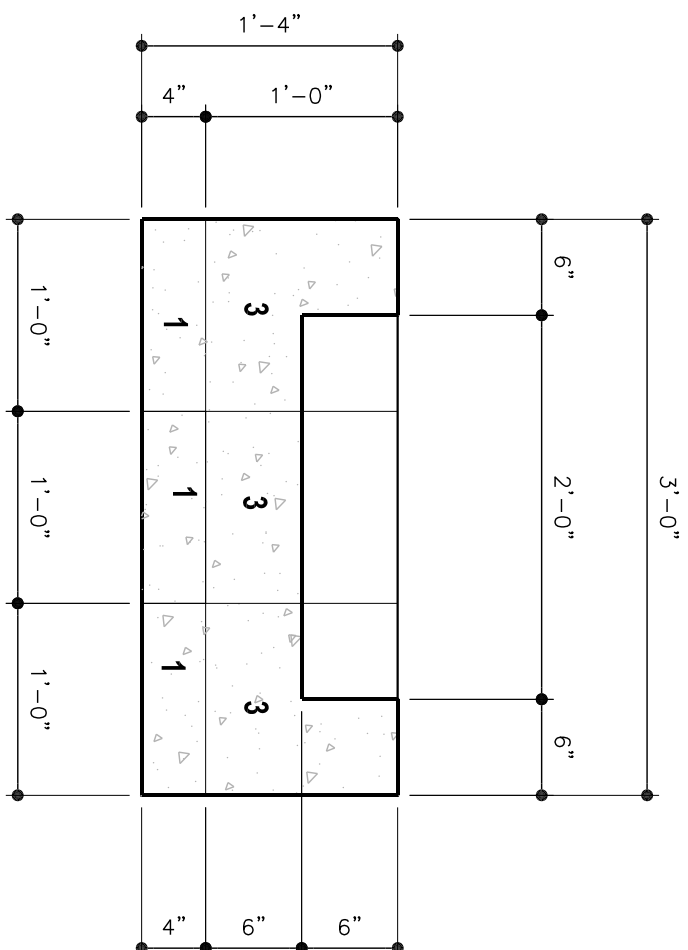
FIRE PIT SECTION

SCALE: 1" = 1'-0"



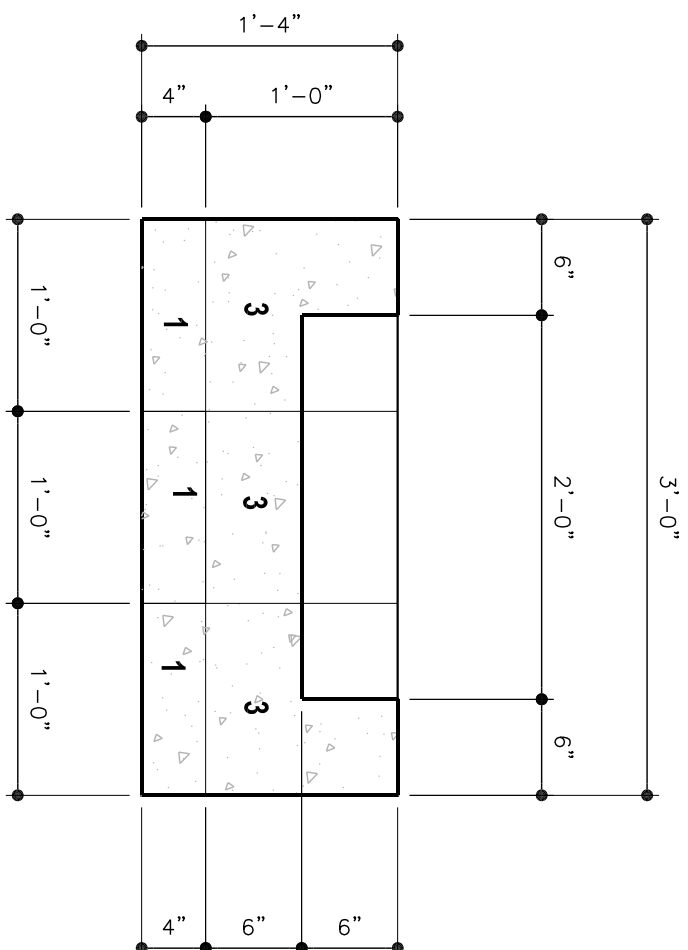
FIRE PIT SECTION

SCALE: 1" = 1'-0"



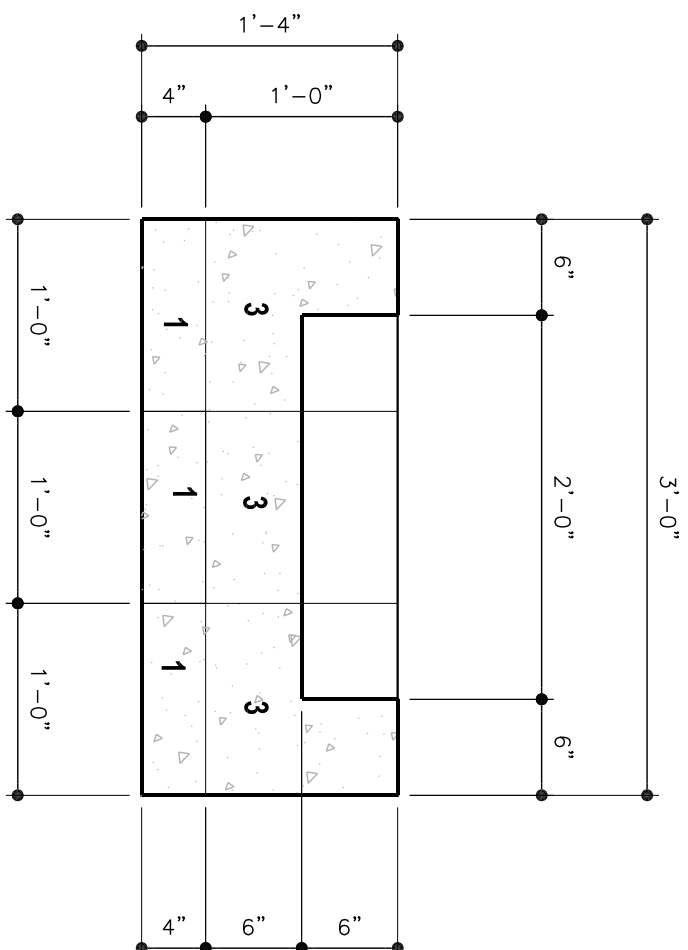
FIRE PIT SECTION

SCALE: 1" = 1'-0"



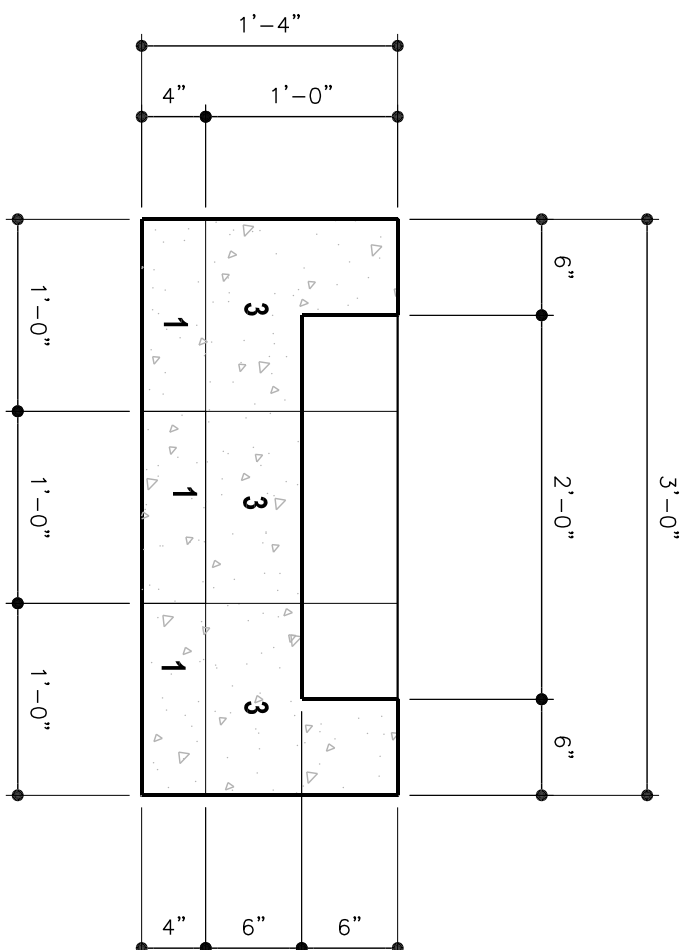
FIRE PIT SECTION

SCALE: 1" = 1'-0"



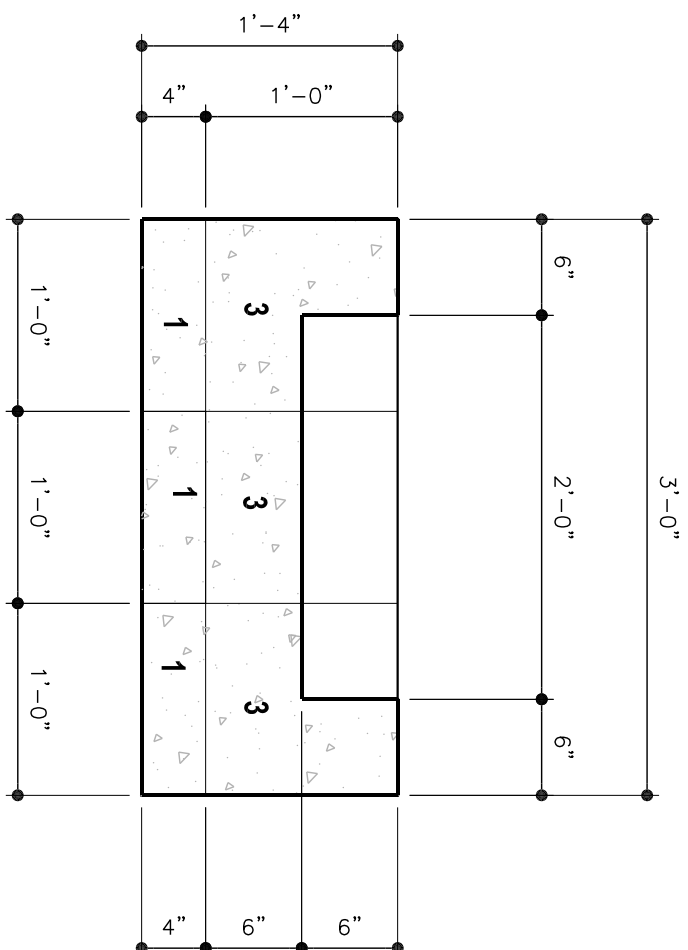
FIRE PIT SECTION

SCALE: 1" = 1'-0"



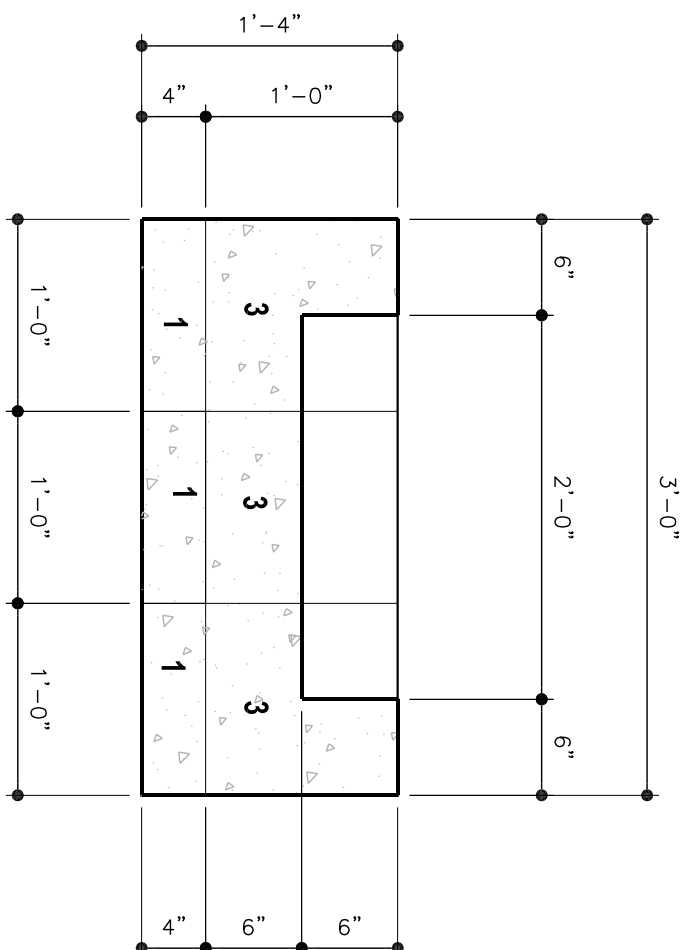
FIRE PIT SECTION

SCALE: 1" = 1'-0"



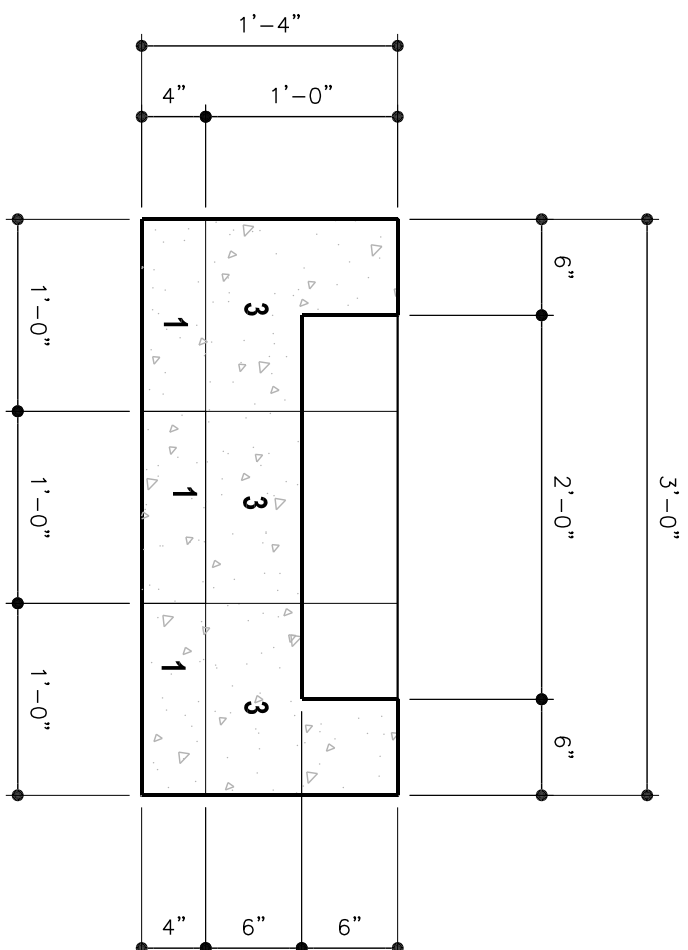
FIRE PIT SECTION

SCALE: 1" = 1'-0"



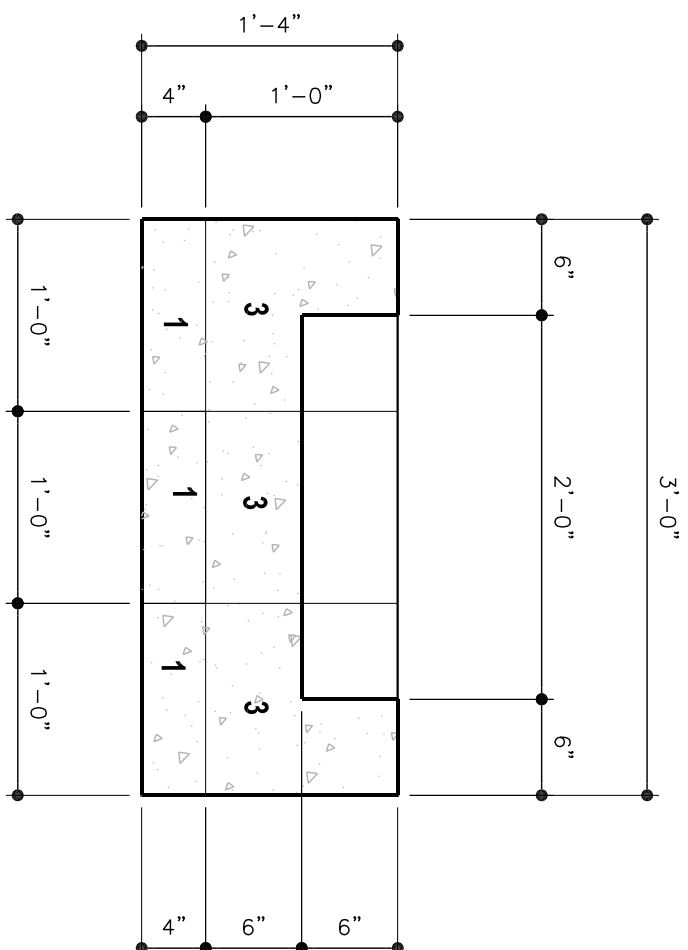
FIRE PIT SECTION

SCALE: 1" = 1'-0"



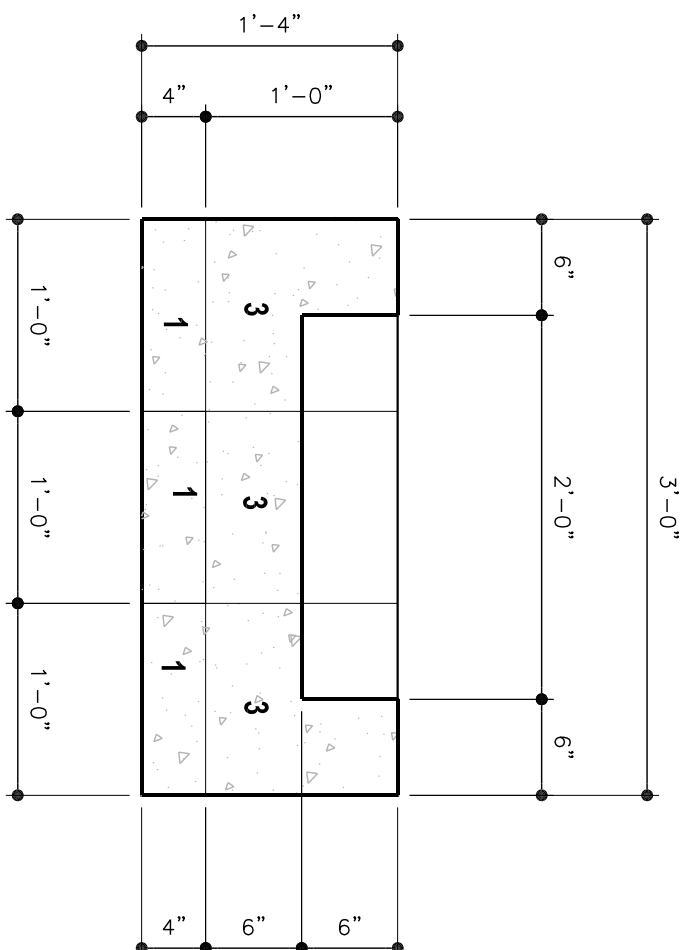
FIRE PIT SECTION

SCALE: 1" = 1'-0"



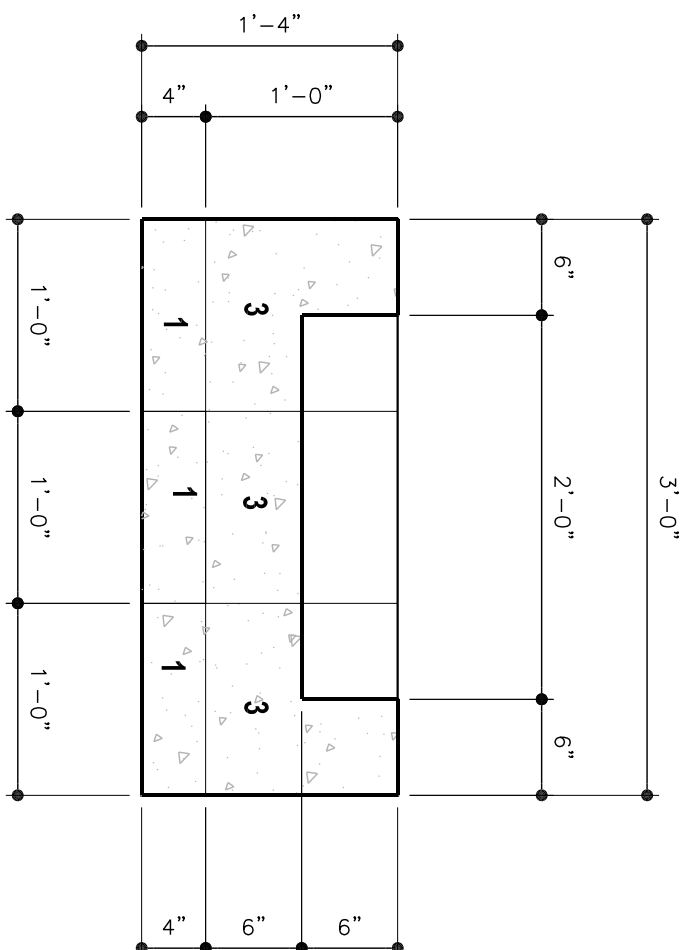
FIRE PIT SECTION

SCALE: 1" = 1'-0"



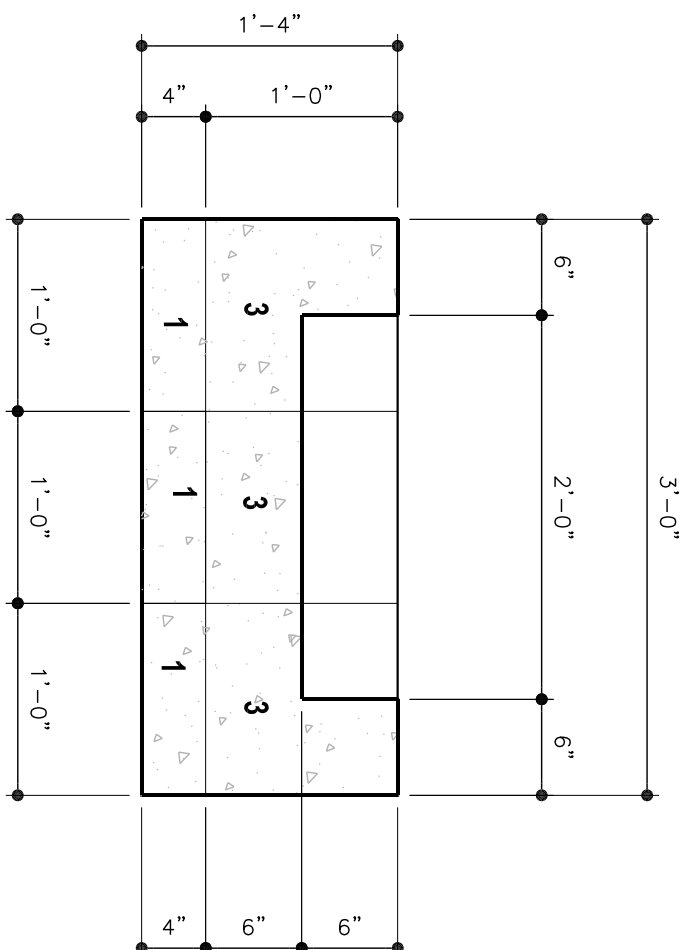
FIRE PIT SECTION

SCALE: 1" = 1'-0"



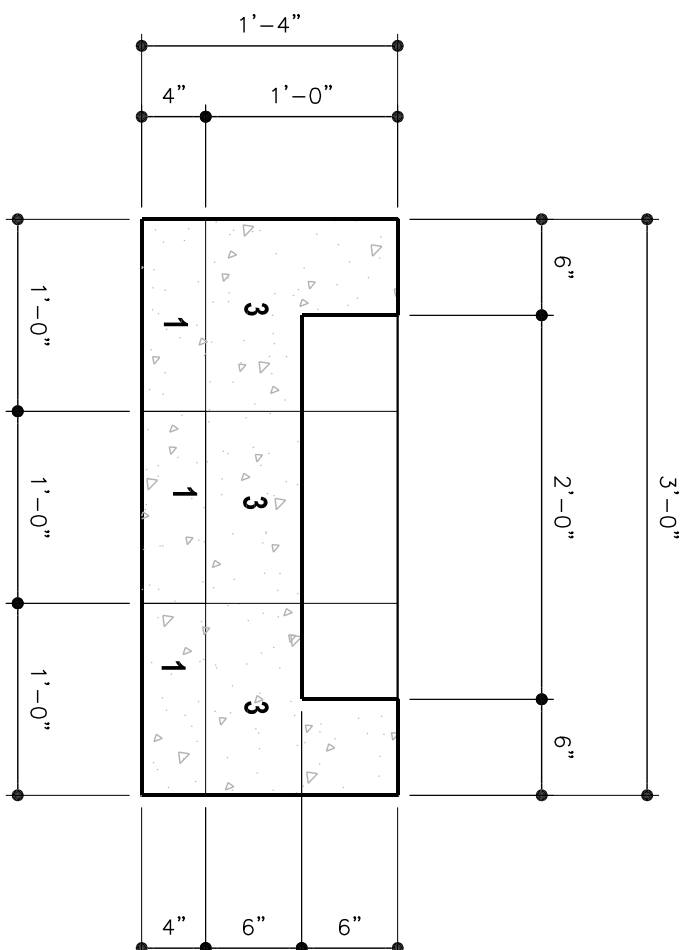
FIRE PIT SECTION

SCALE: 1" = 1'-0"



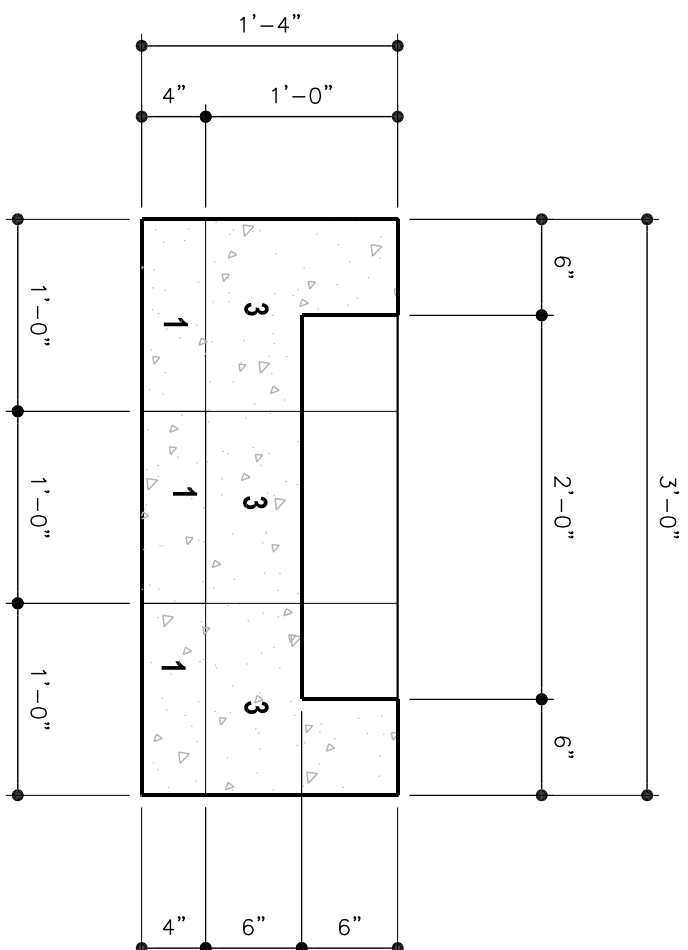
FIRE PIT SECTION

SCALE: 1" = 1'-0"



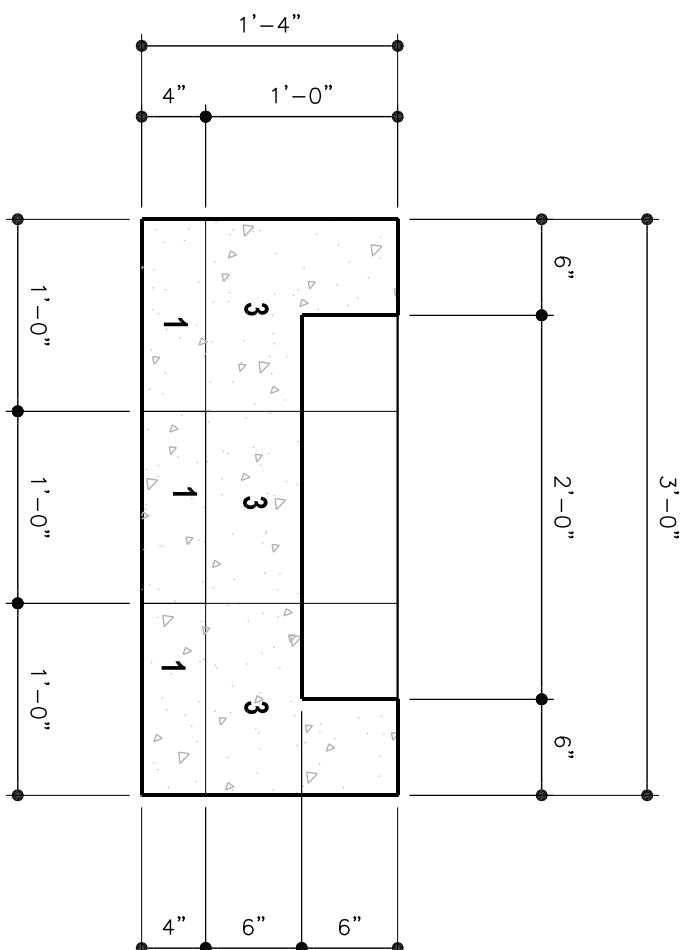
FIRE PIT SECTION

SCALE: 1" = 1'-0"



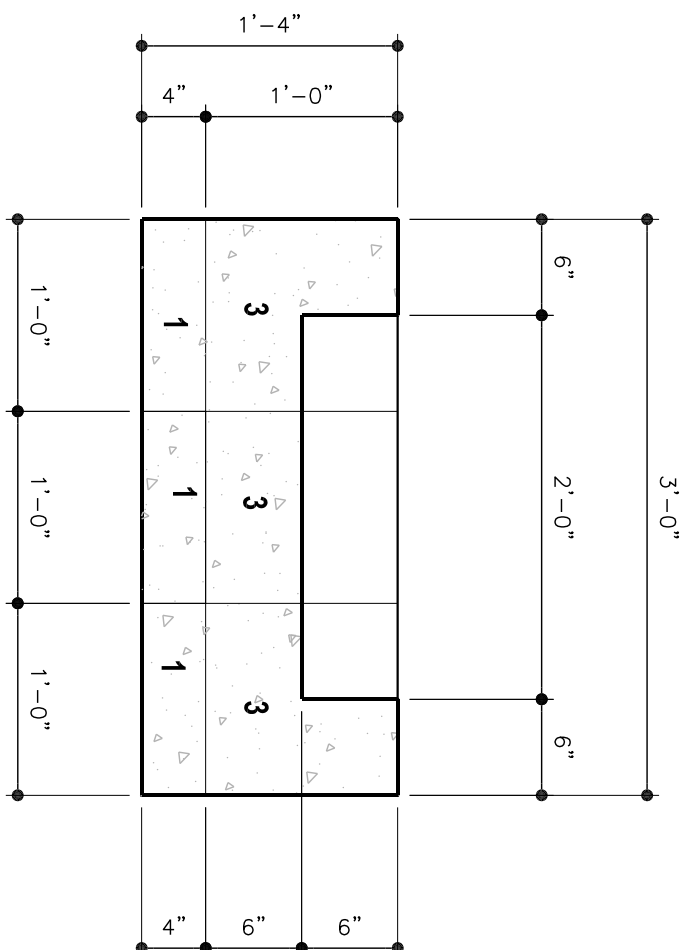
FIRE PIT SECTION

SCALE: 1" = 1'-0"



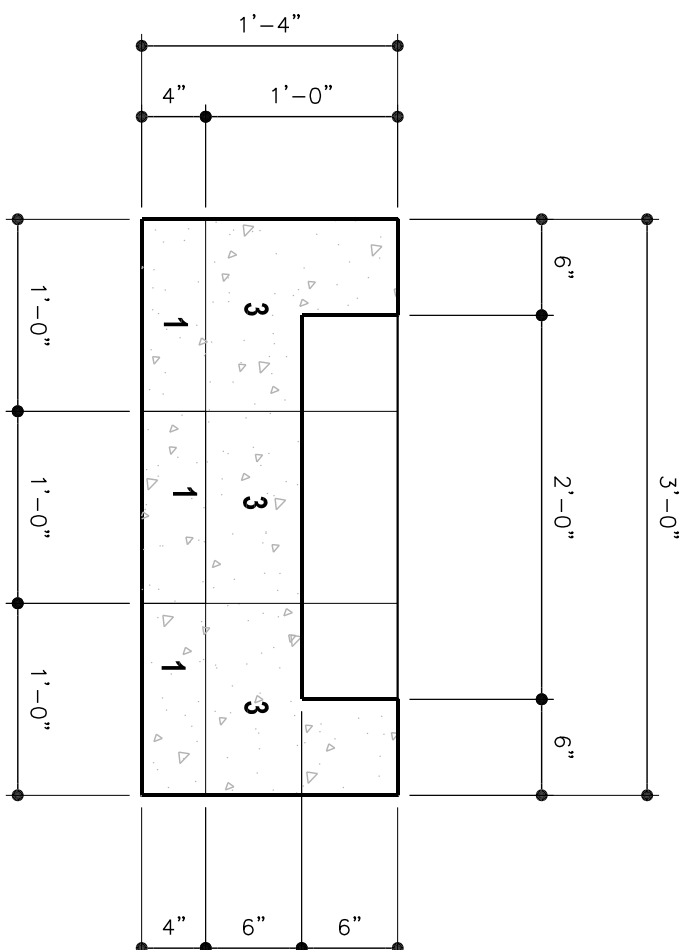
FIRE PIT SECTION

SCALE: 1" = 1'-0"



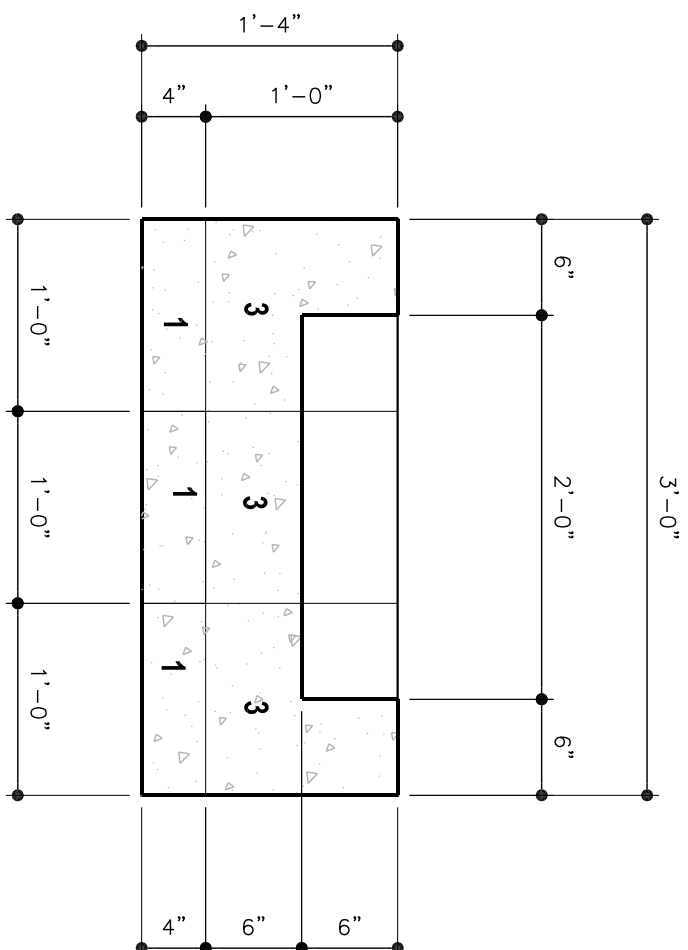
FIRE PIT SECTION

SCALE: 1" = 1'-0"



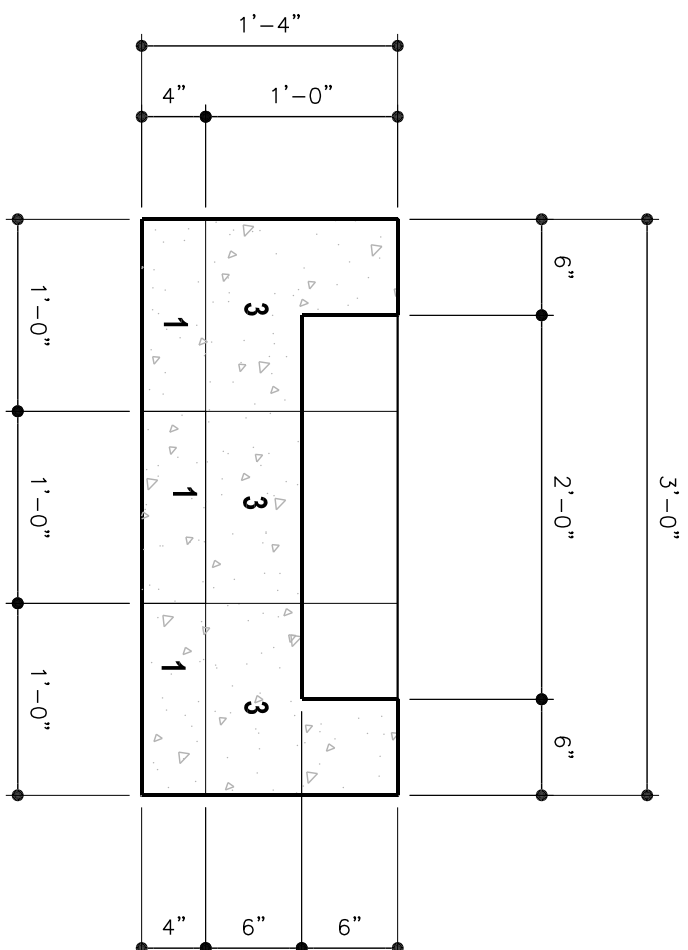
FIRE PIT SECTION

SCALE: 1" = 1'-0"



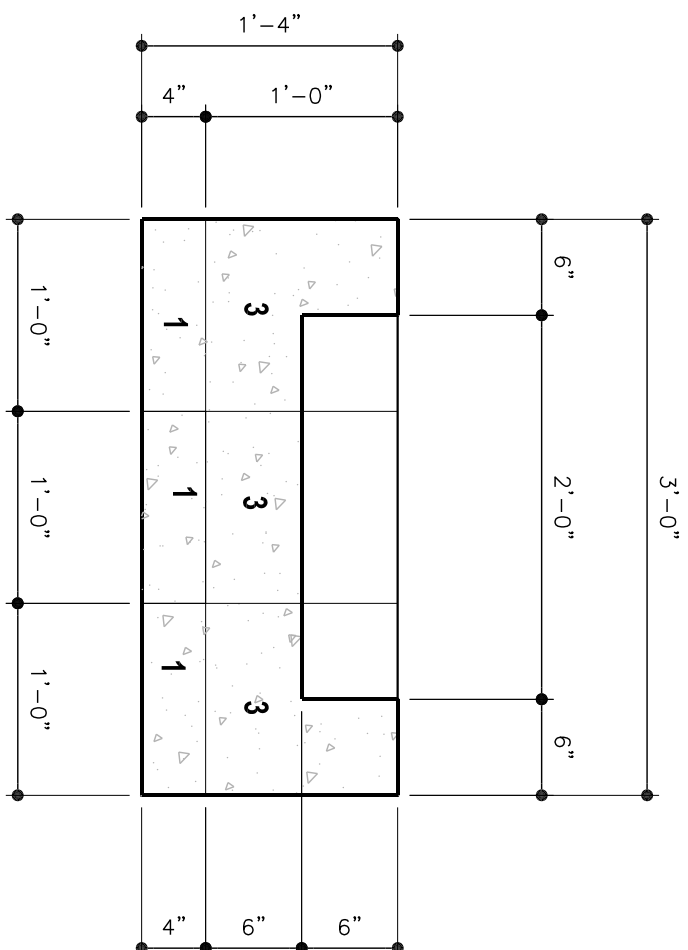
FIRE PIT SECTION

SCALE: 1" = 1'-0"



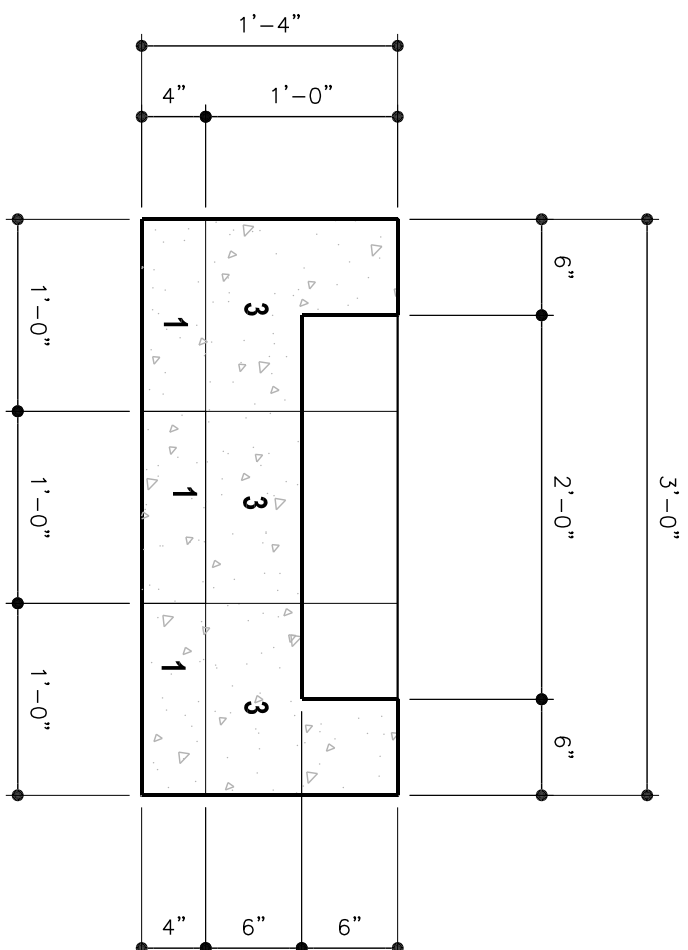
FIRE PIT SECTION

SCALE: 1" = 1'-0"



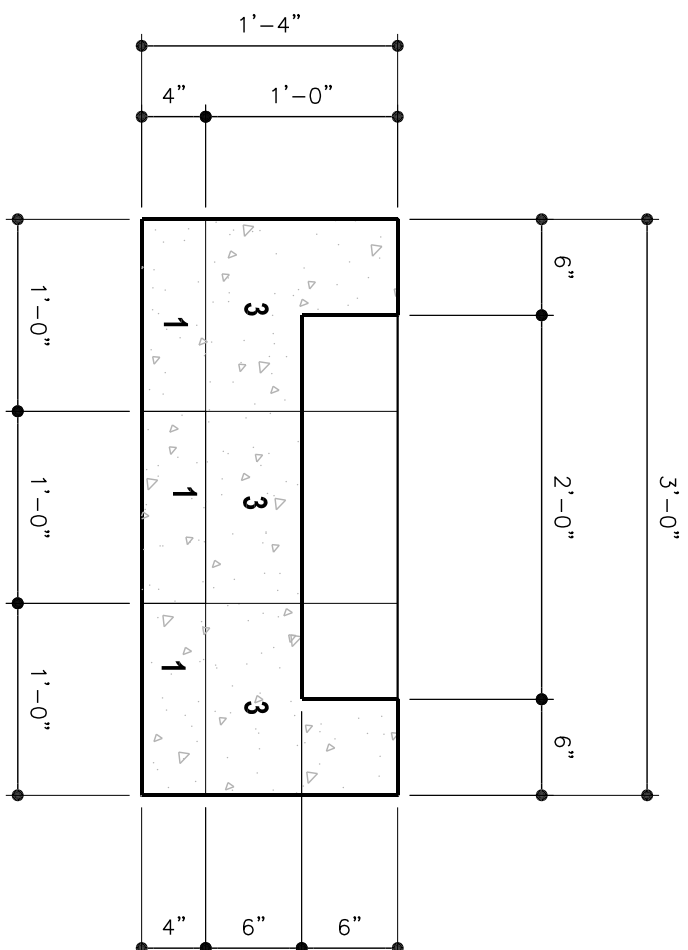
FIRE PIT SECTION

SCALE: 1" = 1'-0"



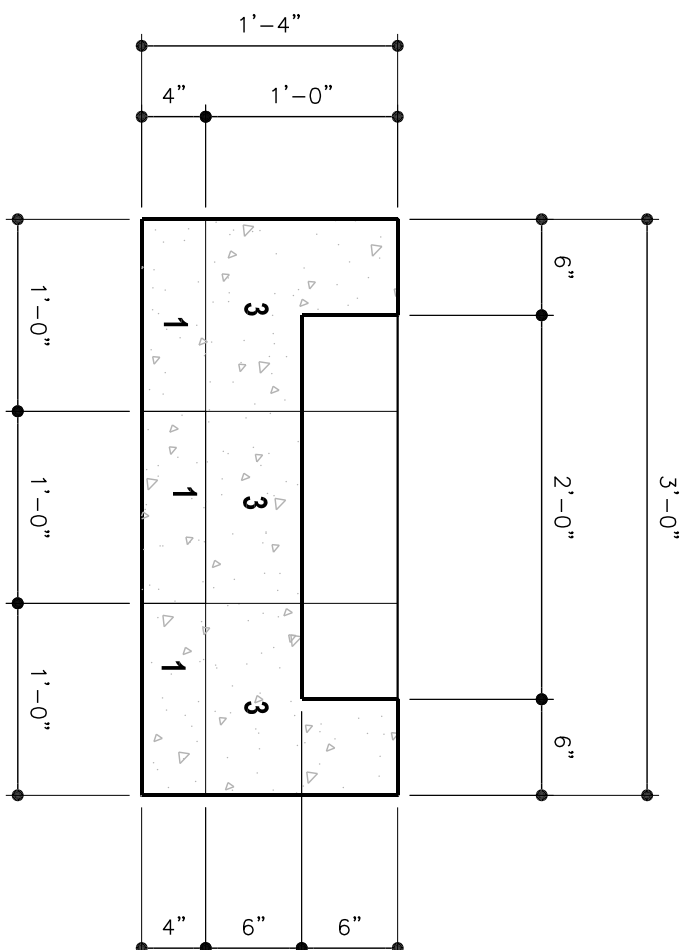
FIRE PIT SECTION

SCALE: 1" = 1'-0"



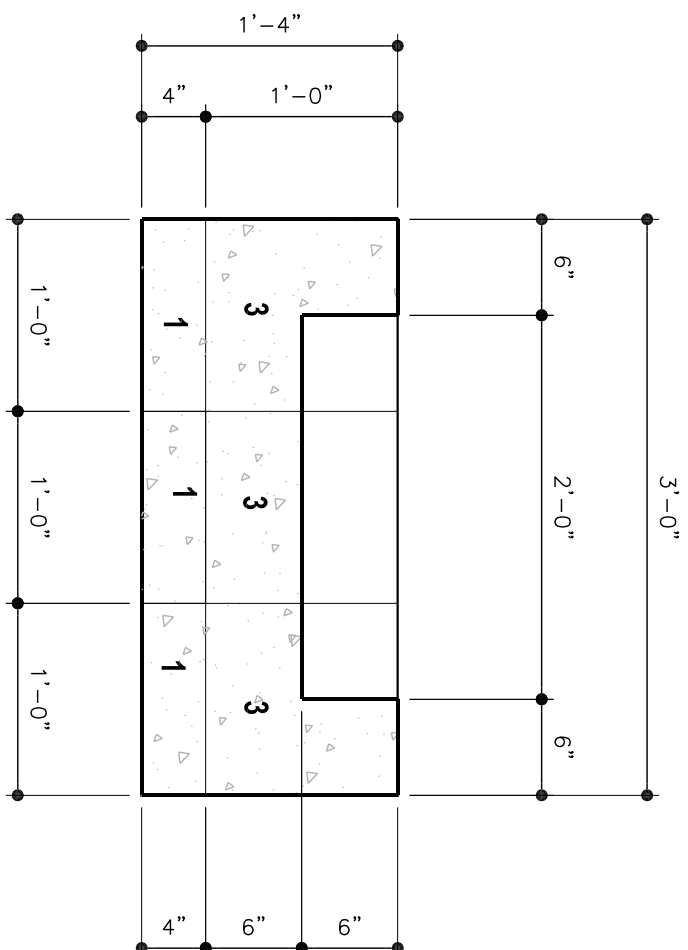
FIRE PIT SECTION

SCALE: 1" = 1'-0"



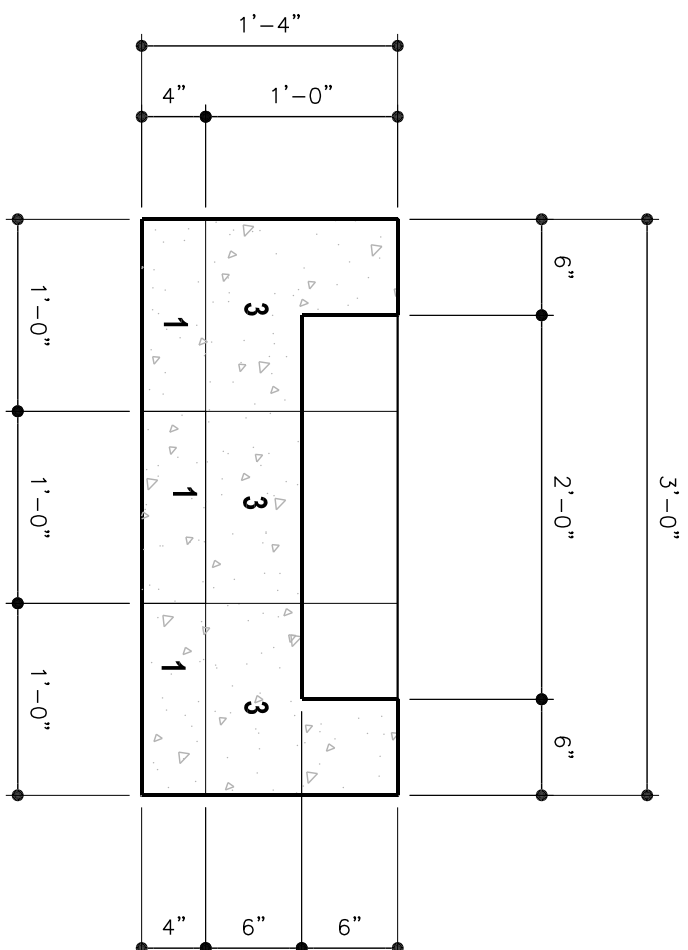
FIRE PIT SECTION

SCALE: 1" = 1'-0"



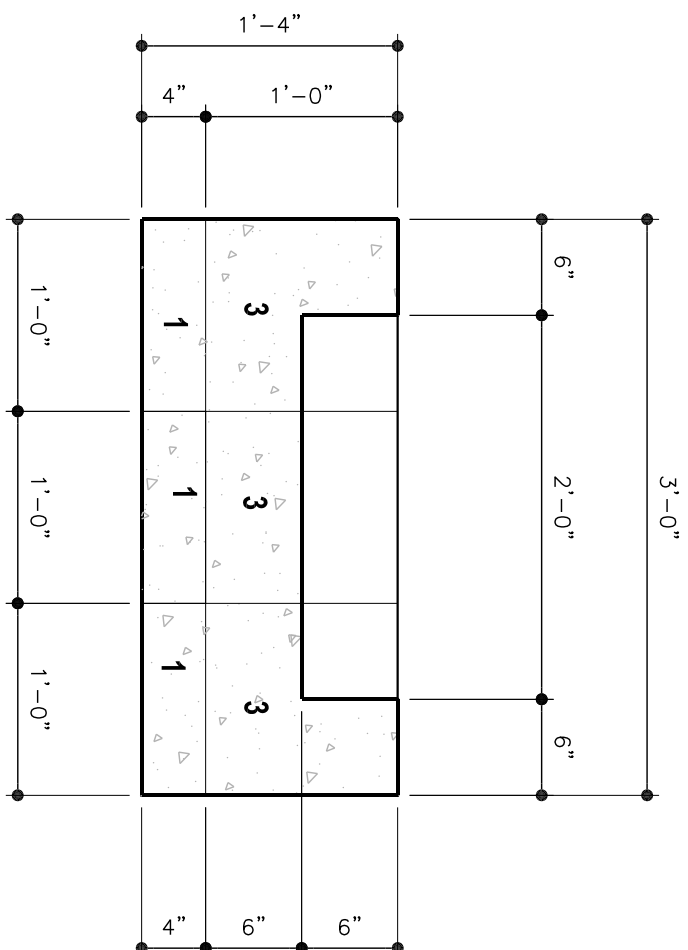
FIRE PIT SECTION

SCALE: 1" = 1'-0"



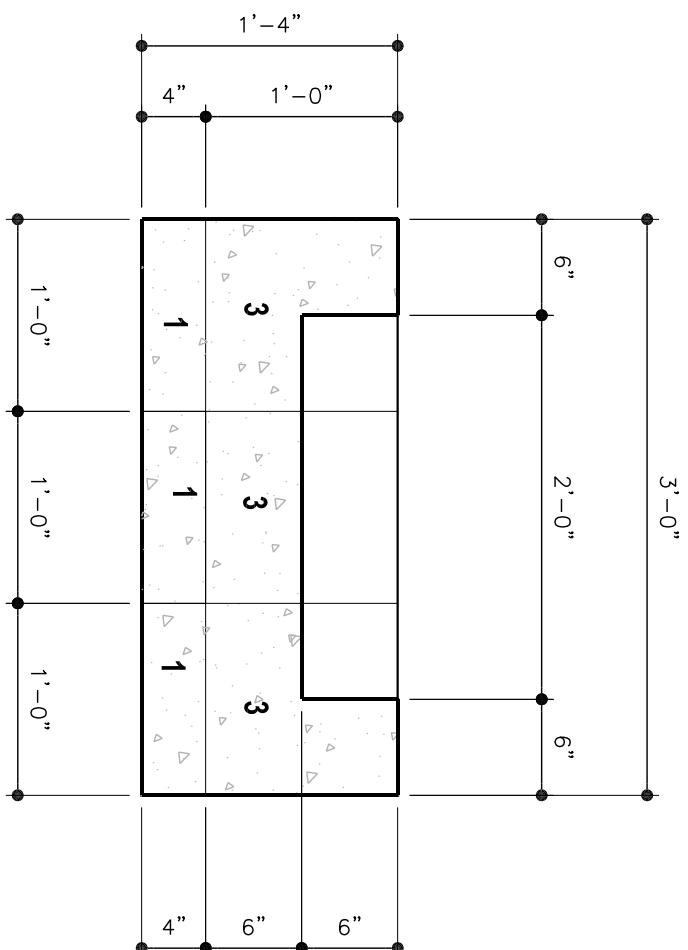
FIRE PIT SECTION

SCALE: 1" = 1'-0"



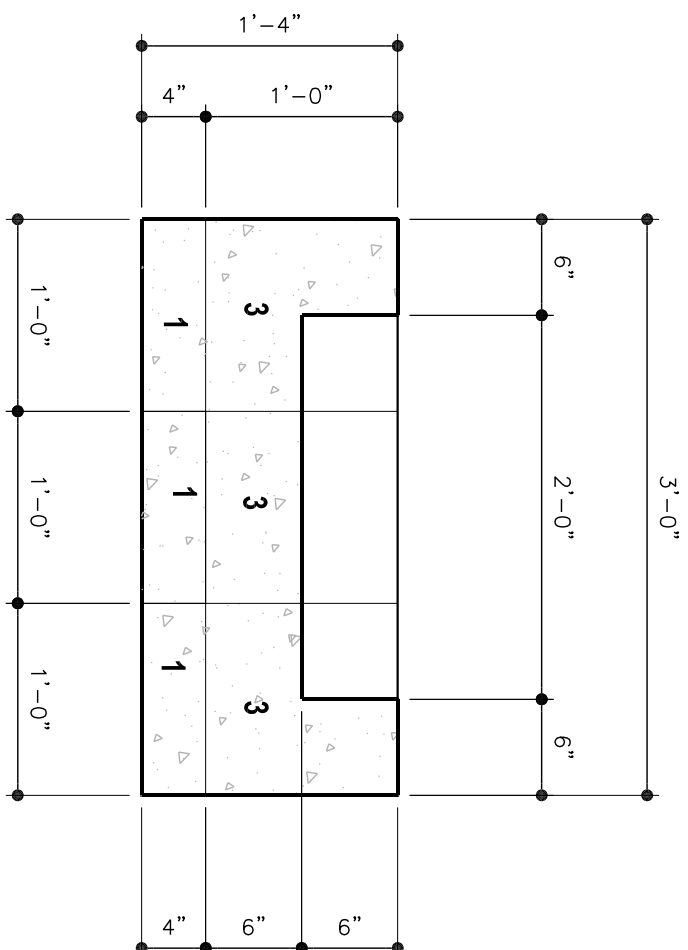
FIRE PIT SECTION

SCALE: 1" = 1'-0"



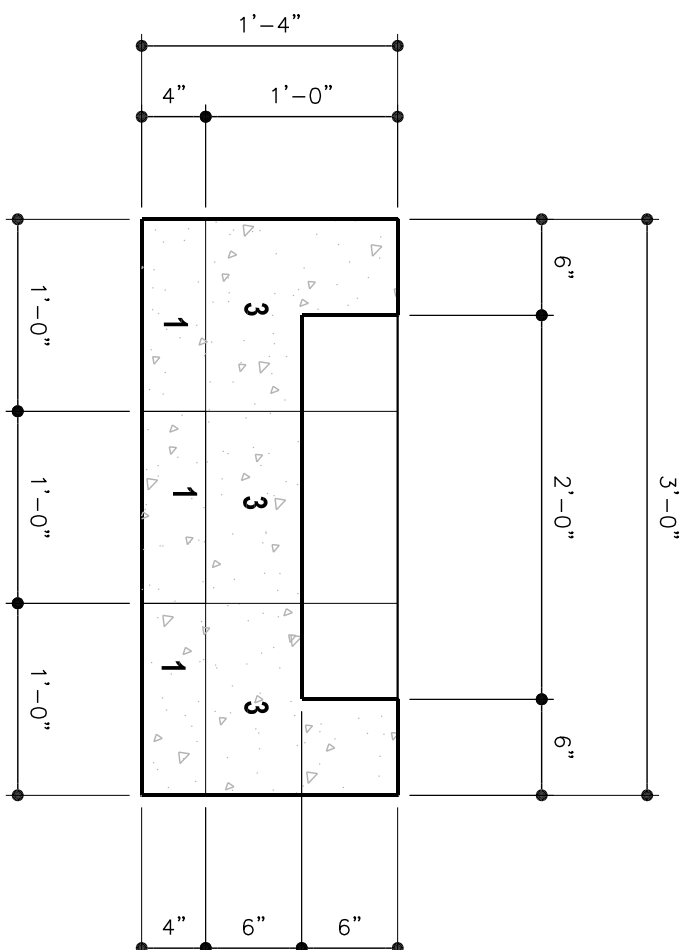
FIRE PIT SECTION

SCALE: 1" = 1'-0"



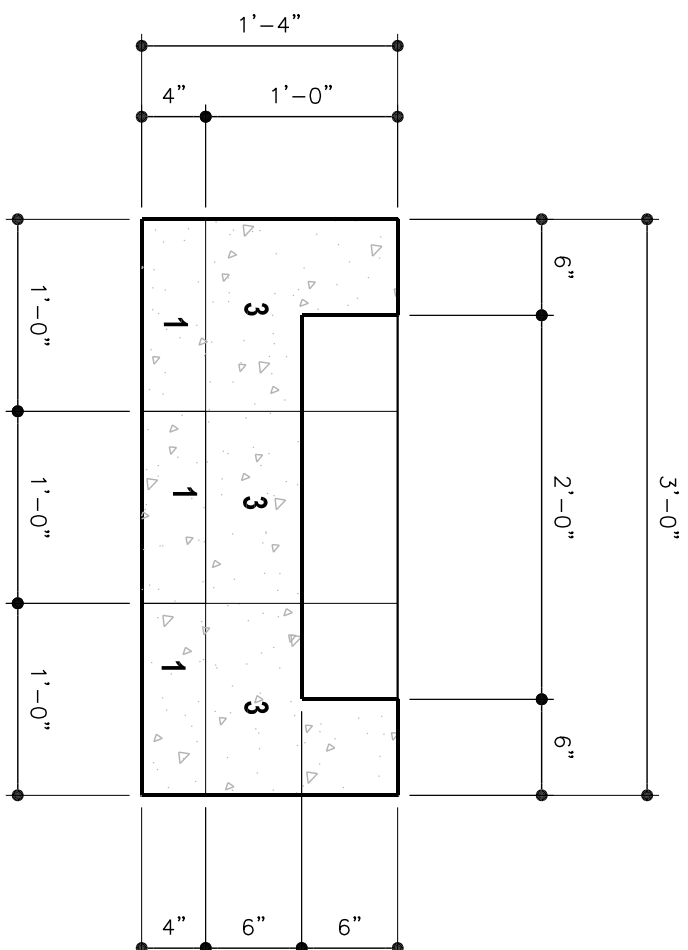
FIRE PIT SECTION

SCALE: 1" = 1'-0"



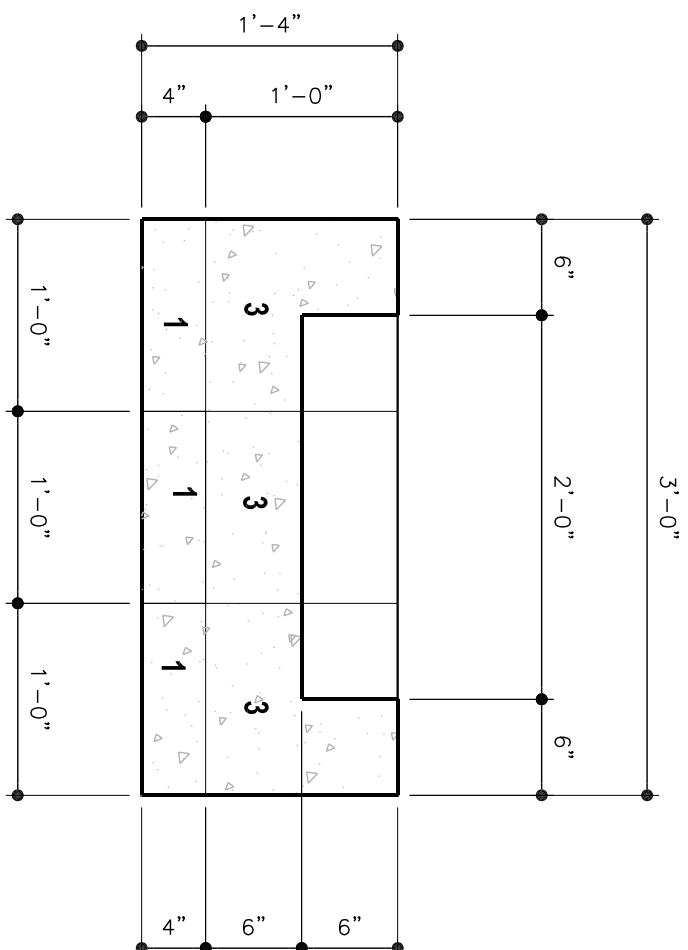
FIRE PIT SECTION

SCALE: 1" = 1'-0"



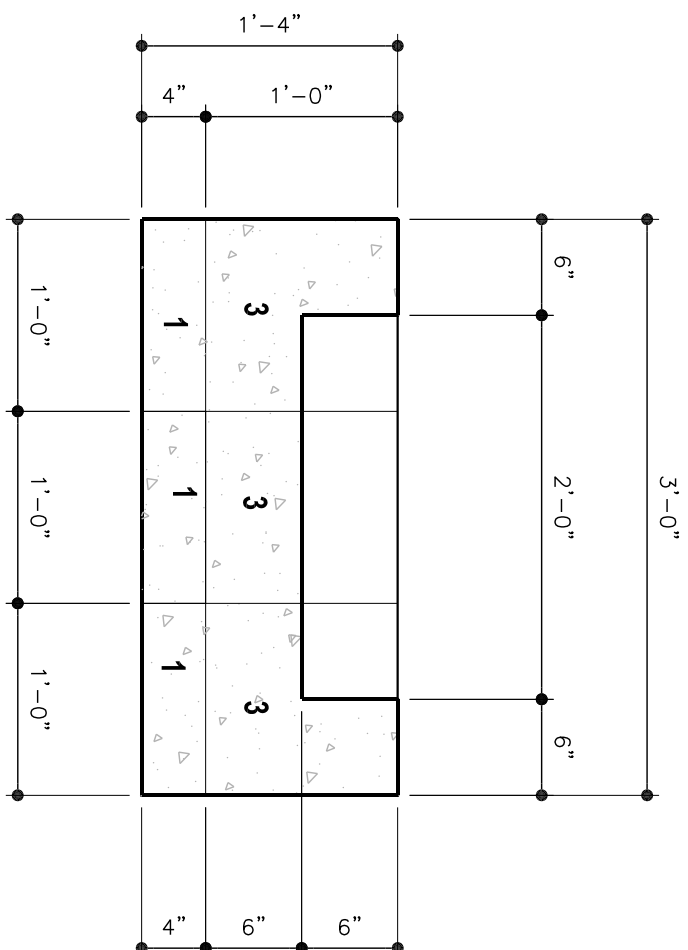
FIRE PIT SECTION

SCALE: 1" = 1'-0"



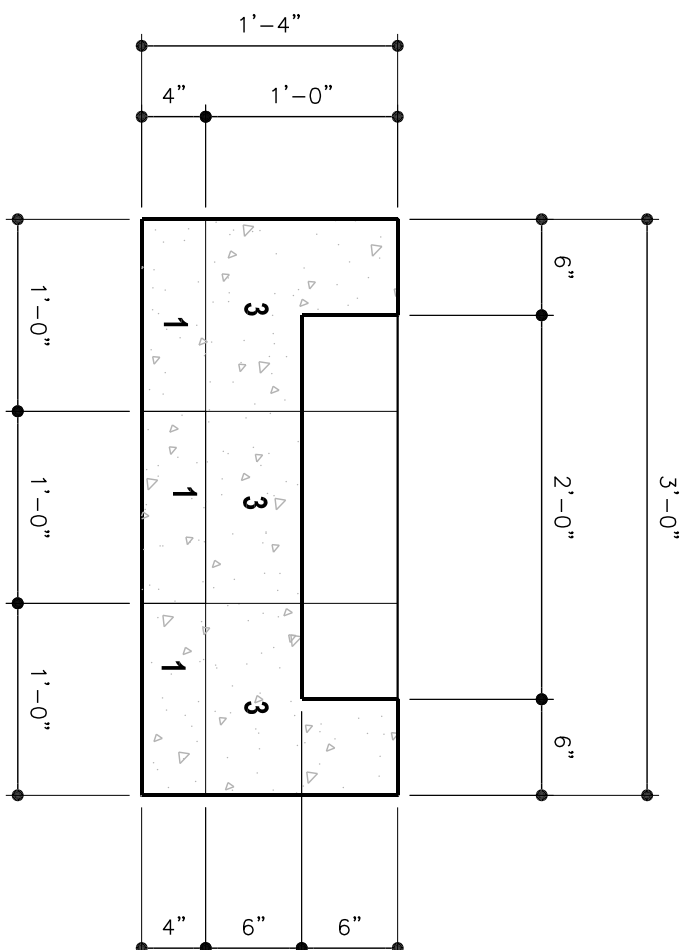
FIRE PIT SECTION

SCALE: 1" = 1'-0"



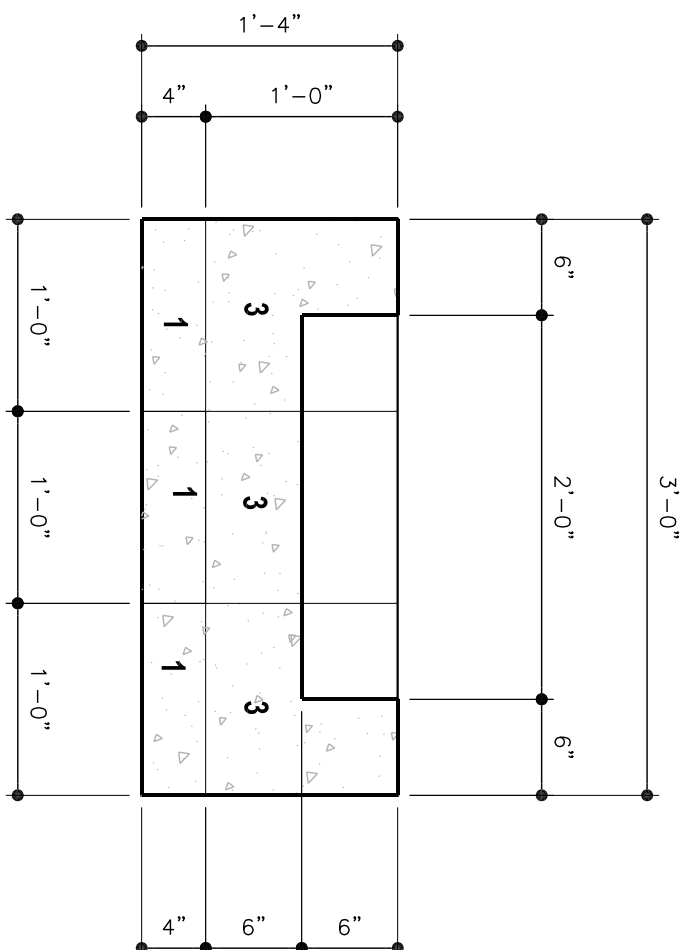
FIRE PIT SECTION

SCALE: 1" = 1'-0"



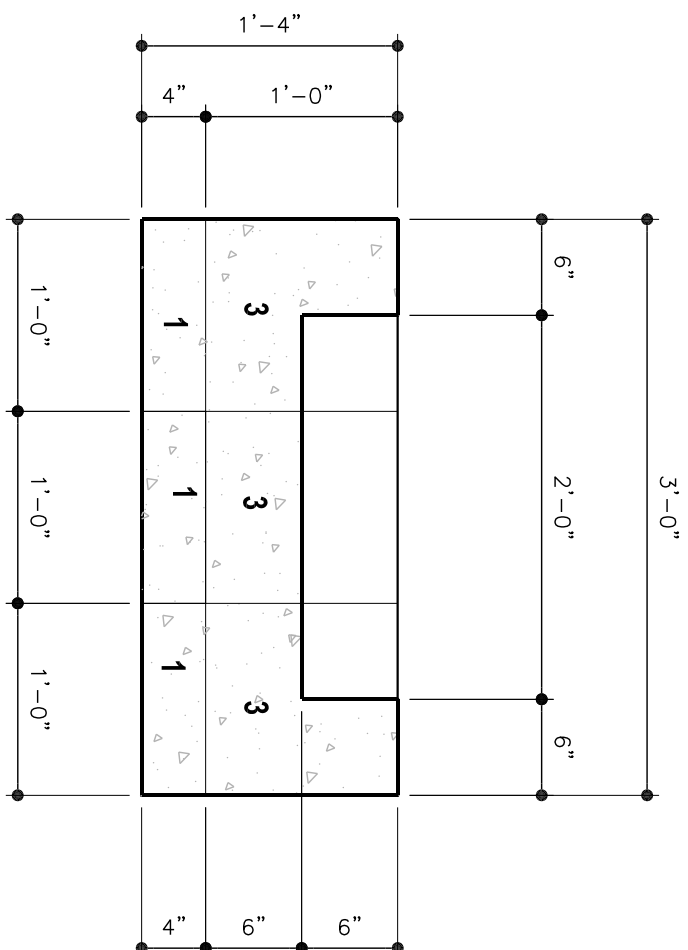
FIRE PIT SECTION

SCALE: 1" = 1'-0"



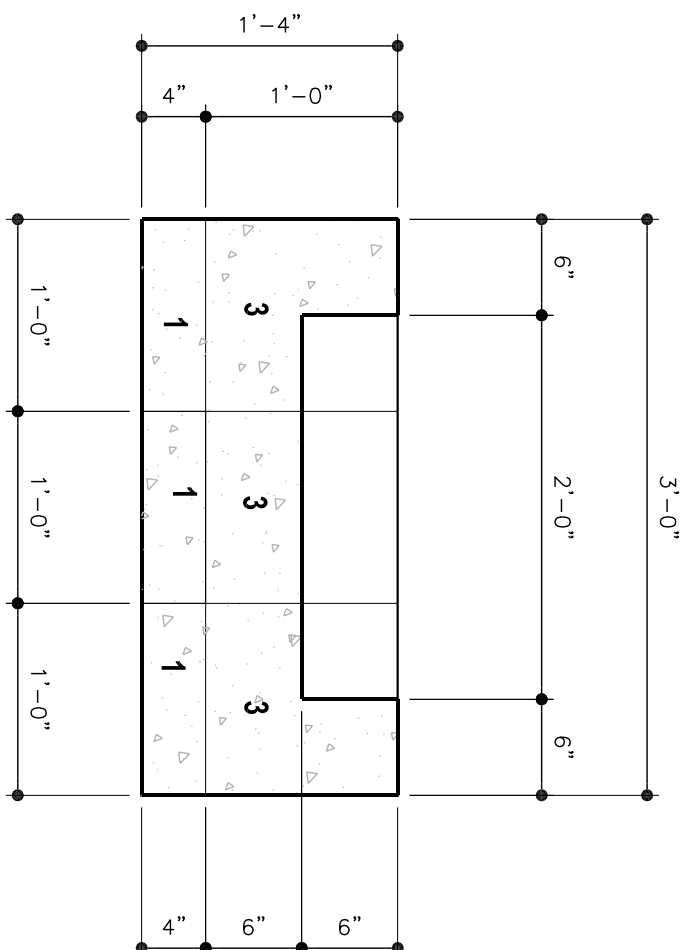
FIRE PIT SECTION

SCALE: 1" = 1'-0"



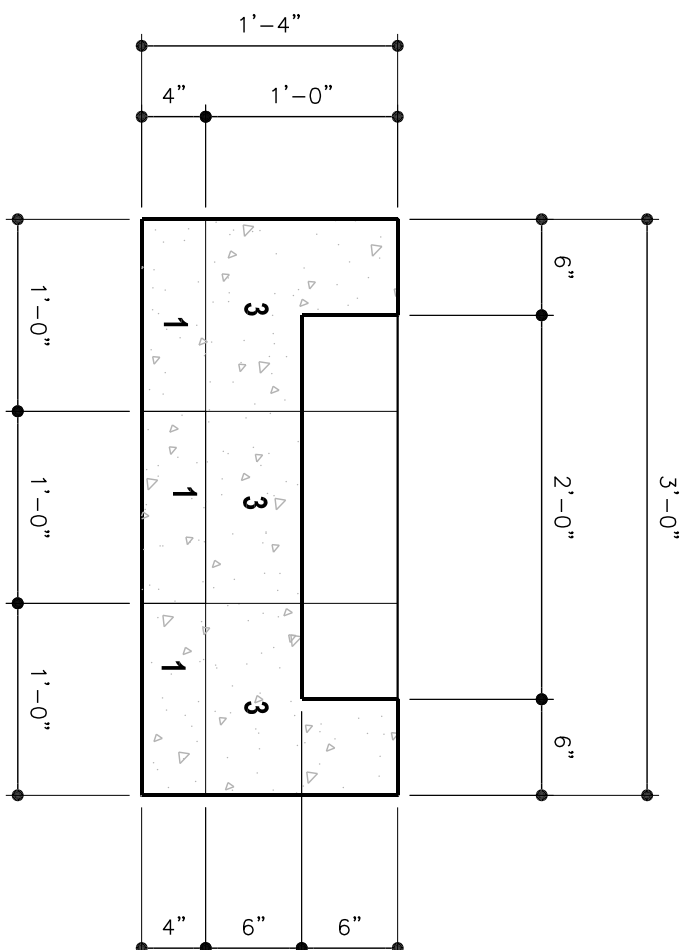
FIRE PIT SECTION

SCALE: 1" = 1'-0"



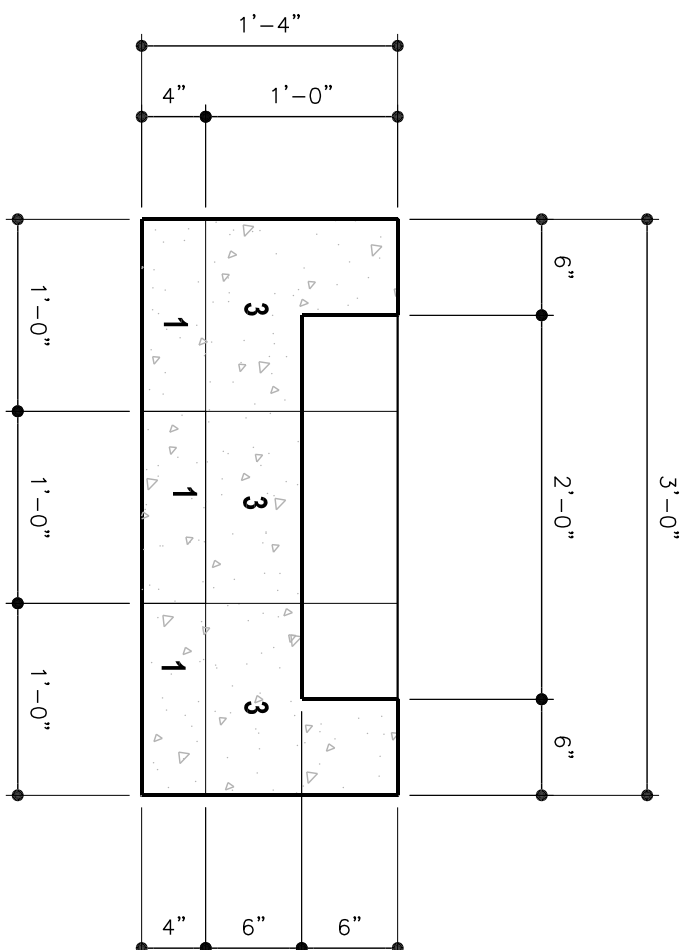
FIRE PIT SECTION

SCALE: 1" = 1'-0"



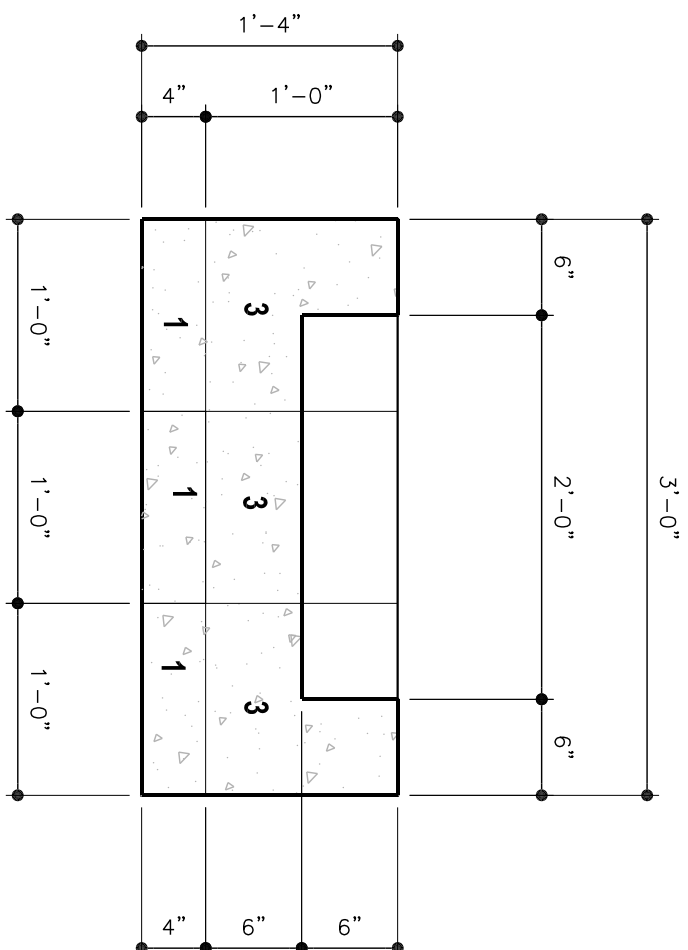
FIRE PIT SECTION

SCALE: 1" = 1'-0"



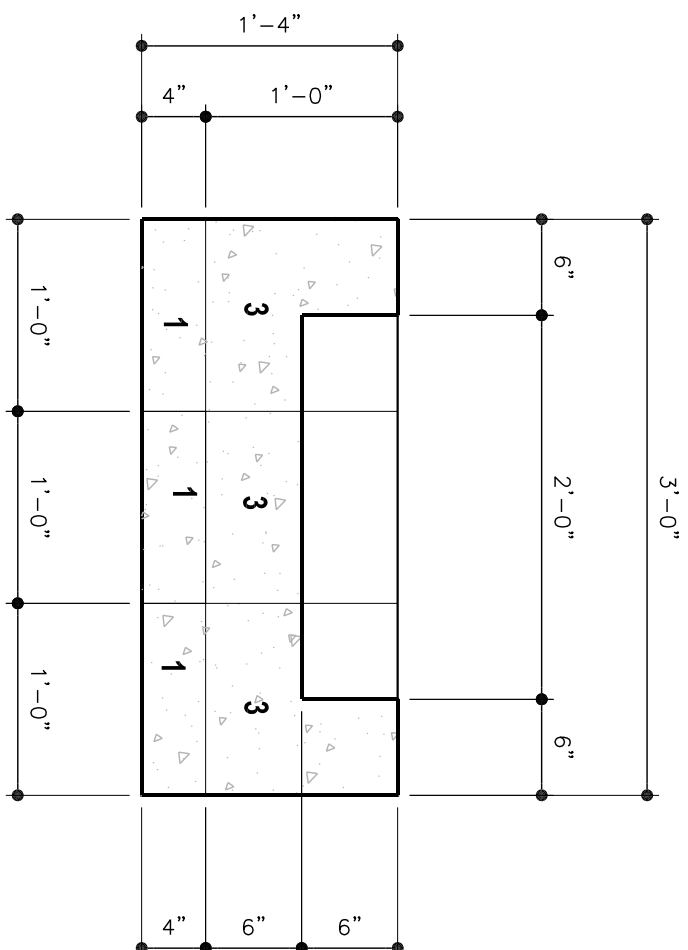
FIRE PIT SECTION

SCALE: 1" = 1'-0"



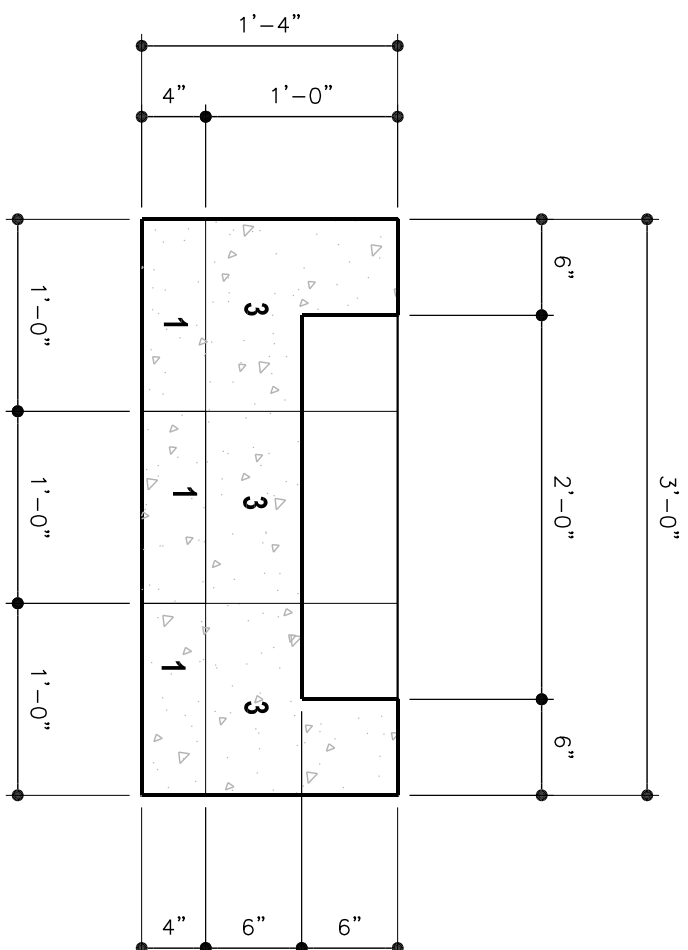
FIRE PIT SECTION

SCALE: 1" = 1'-0"



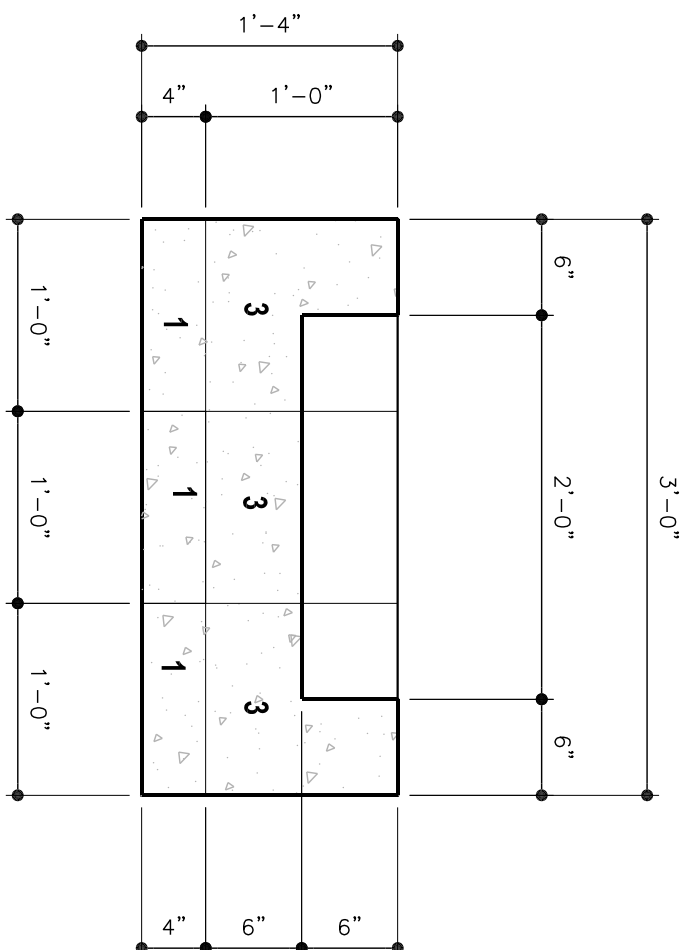
FIRE PIT SECTION

SCALE: 1" = 1'-0"



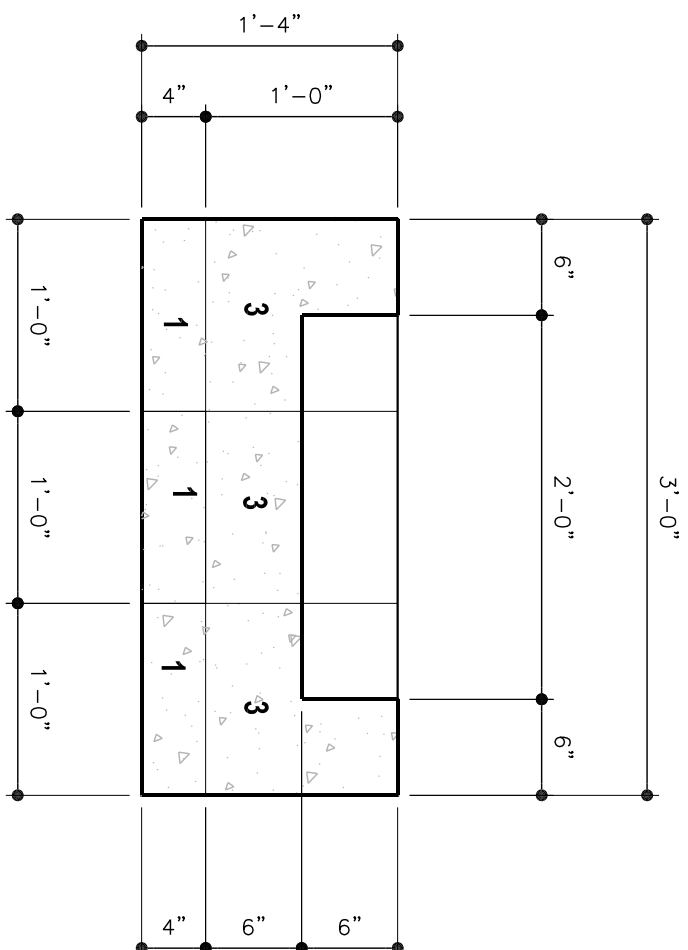
FIRE PIT SECTION

SCALE: 1" = 1'-0"



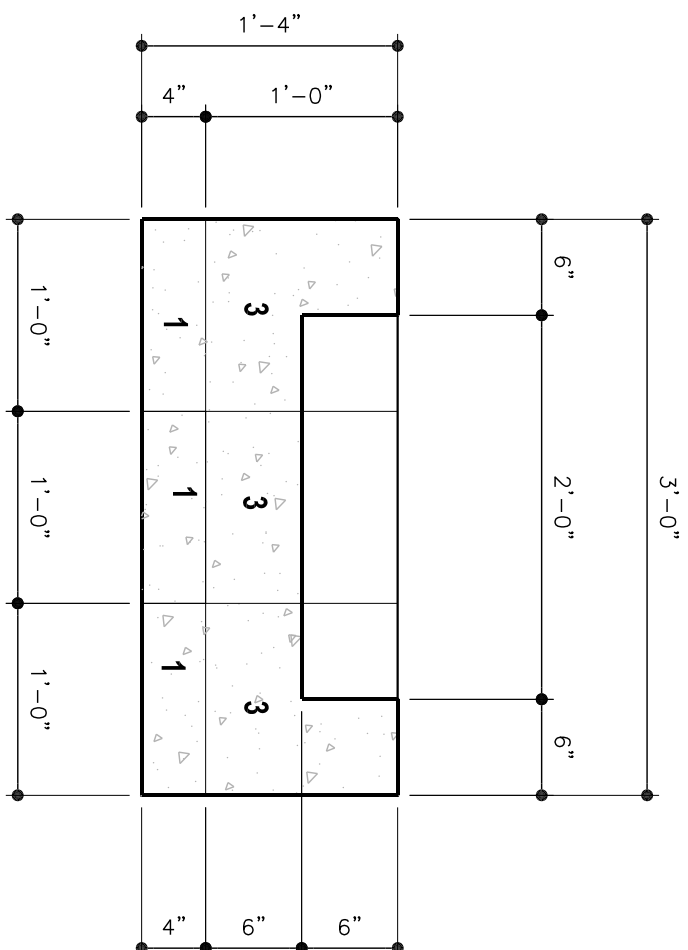
FIRE PIT SECTION

SCALE: 1" = 1'-0"



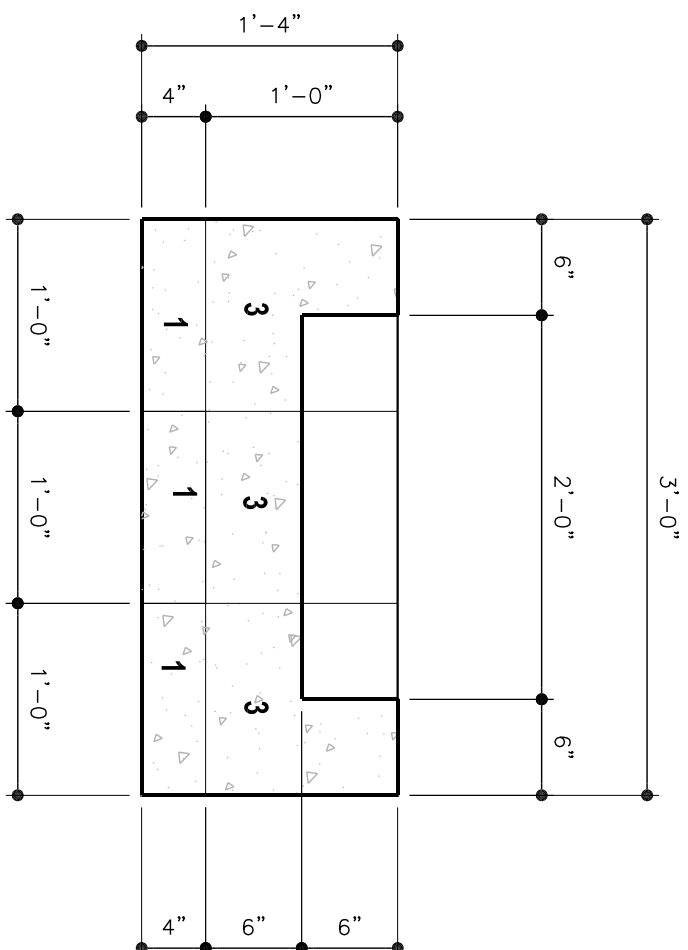
FIRE PIT SECTION

SCALE: 1" = 1'-0"



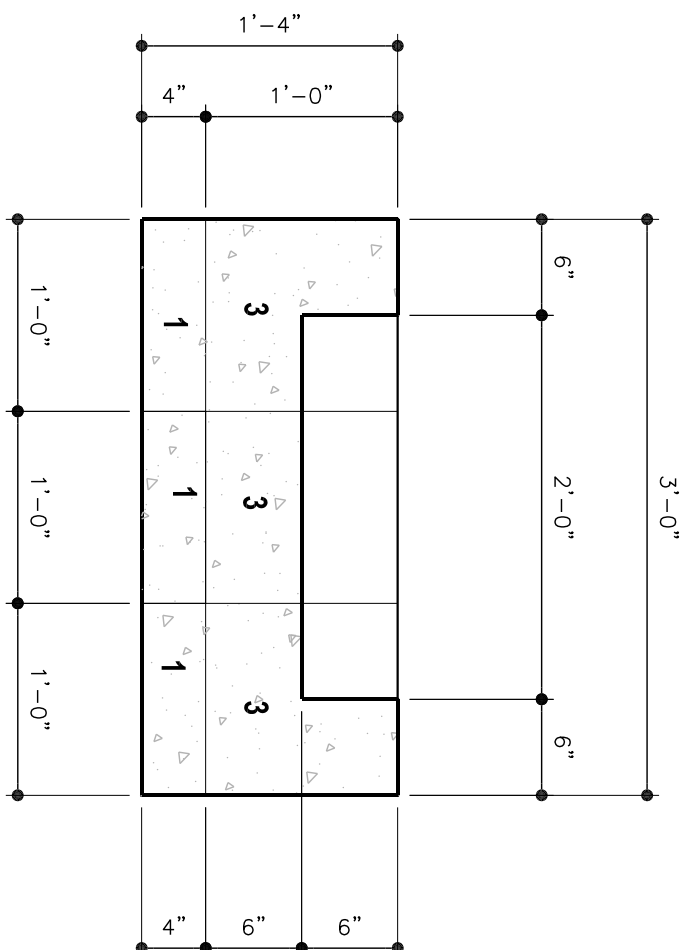
FIRE PIT SECTION

SCALE: 1" = 1'-0"



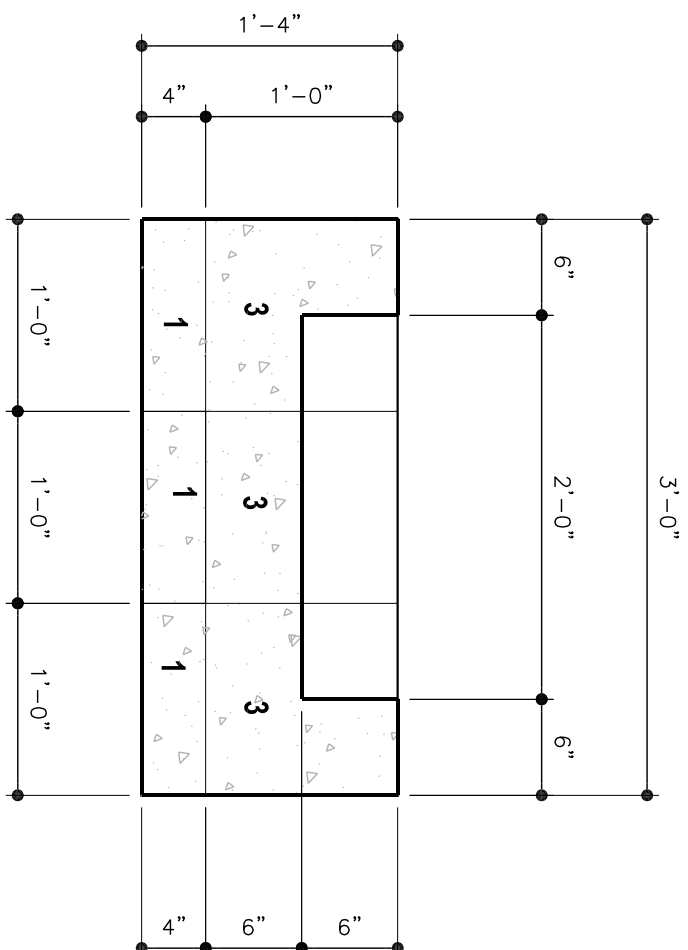
FIRE PIT SECTION

SCALE: 1" = 1'-0"



FIRE PIT SECTION

SCALE: 1" = 1'-0"

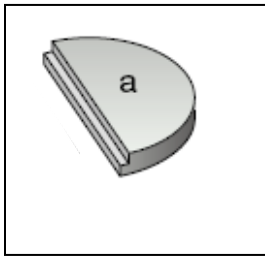


# INSTALLATION AND SPECIFICATION PAGE FOR FIRE ROCK FIRE RING

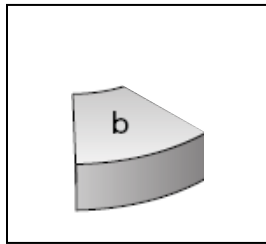
## Site Preparation:

- Generally, a concrete pad 4 – 6 inches thick with footings as dictated by local building codes, is the best surface on which to erect any fire feature.
- With proper ground preparation, such as the gravel and sand layering under a paver patio, a Fire Rock Fire Ring may be installed without a concrete foundation.
- If it is your intention to install this product on a combustible surface (wooden deck), take extra precautions to insulate the surface under and surrounding the Fire Ring so that neither heat transference nor sparks present a hazard.

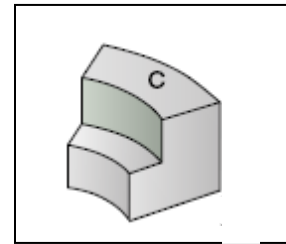
**Center Base**



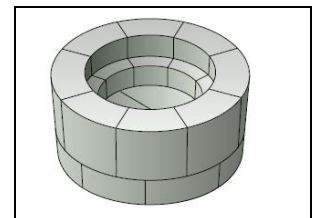
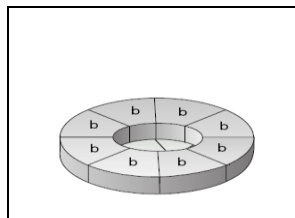
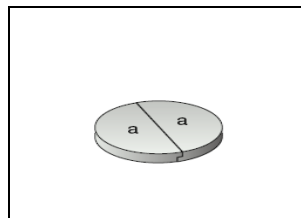
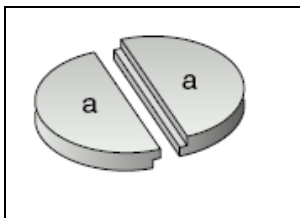
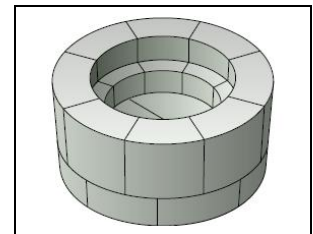
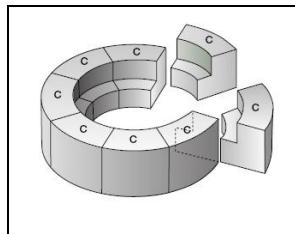
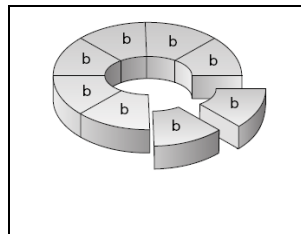
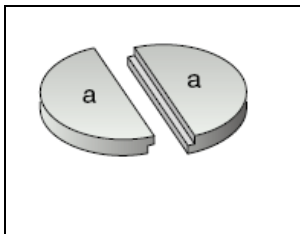
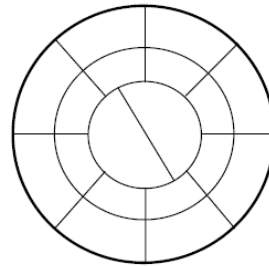
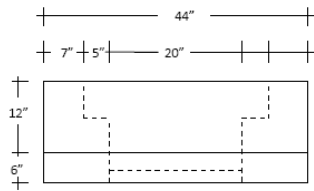
**Riser Block**



**Fire Ring Block**



## Specifications:



**Step 1**

**Step 2**

**Step 3**

**Step 4**

Each surface connecting with another surface must be generously covered with Fire Rock Adhesive Mortar.



**FIRE ROCK**  
BUILDING MATERIALS

**FireRock Building Materials**

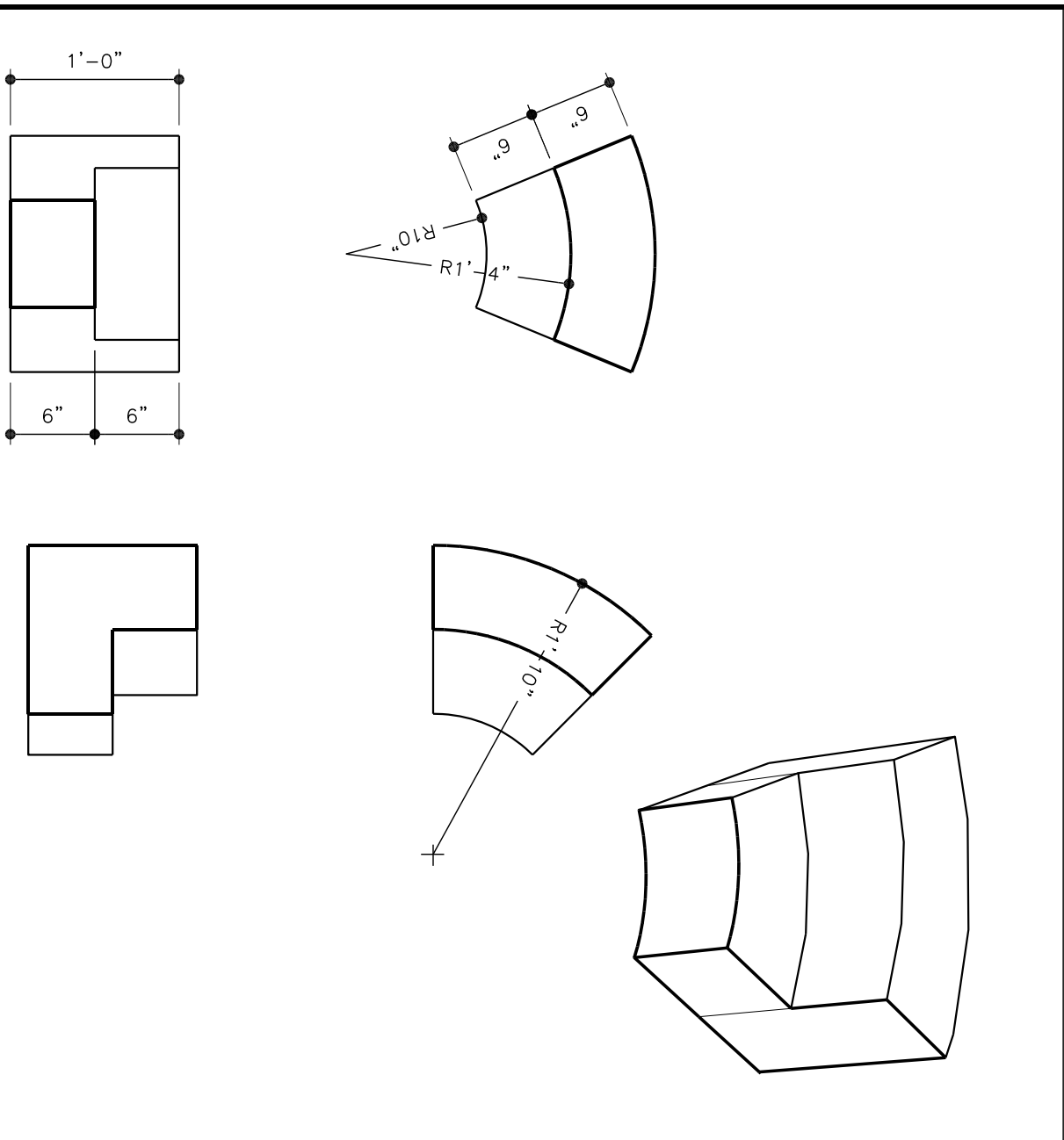
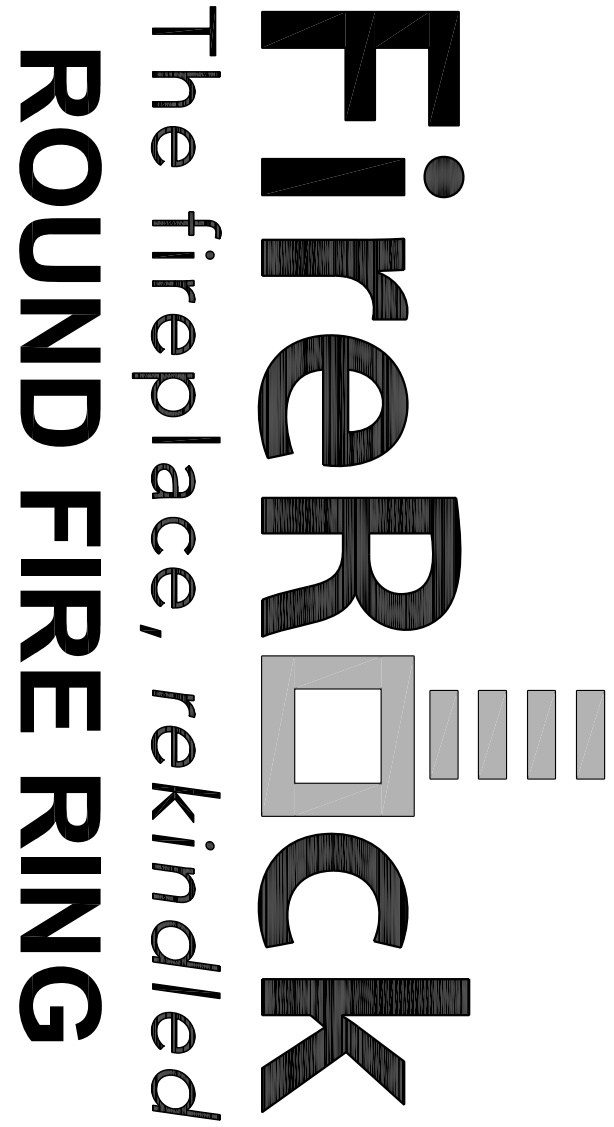
**205.639.5000**

**Toll Free: 888.876.1025**

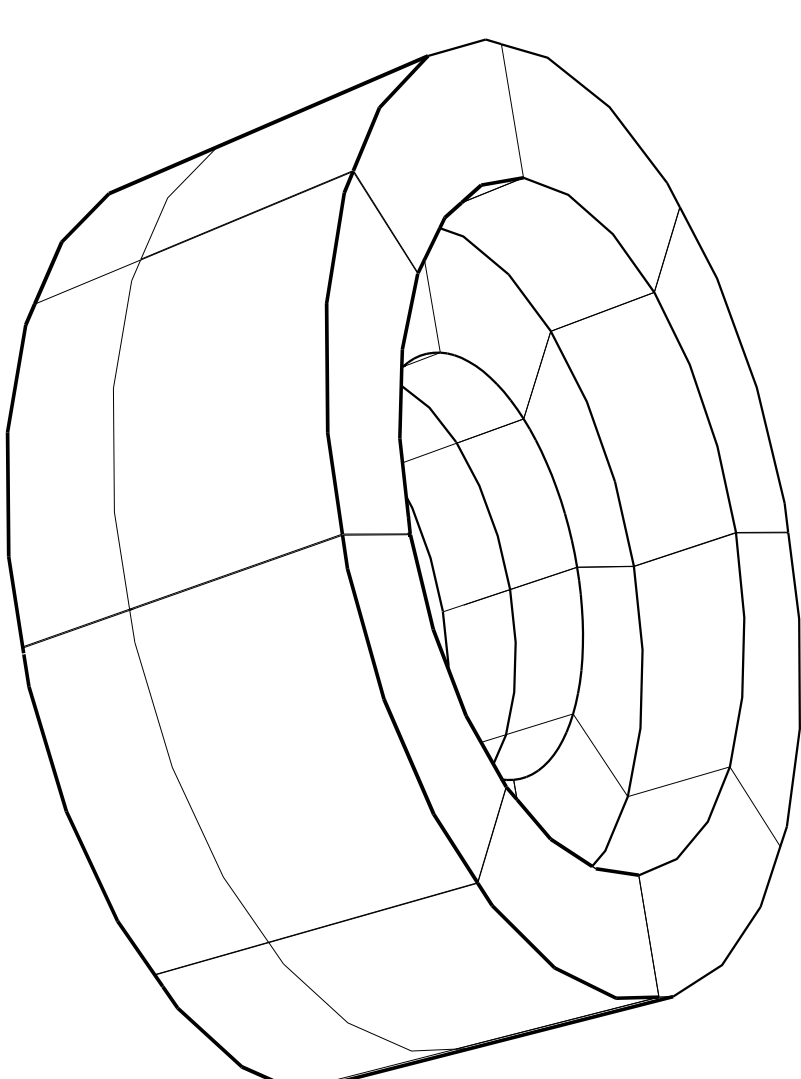
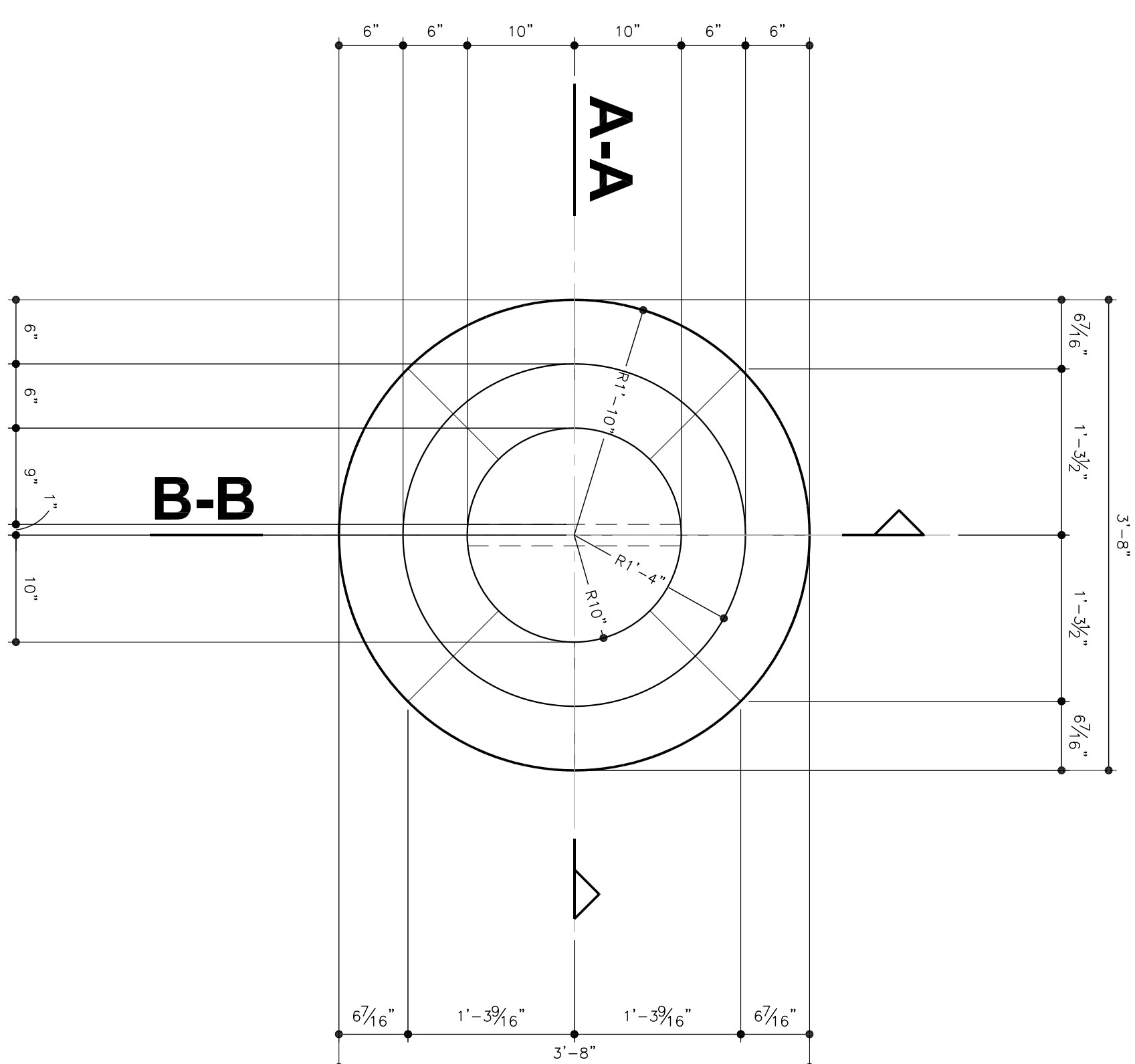
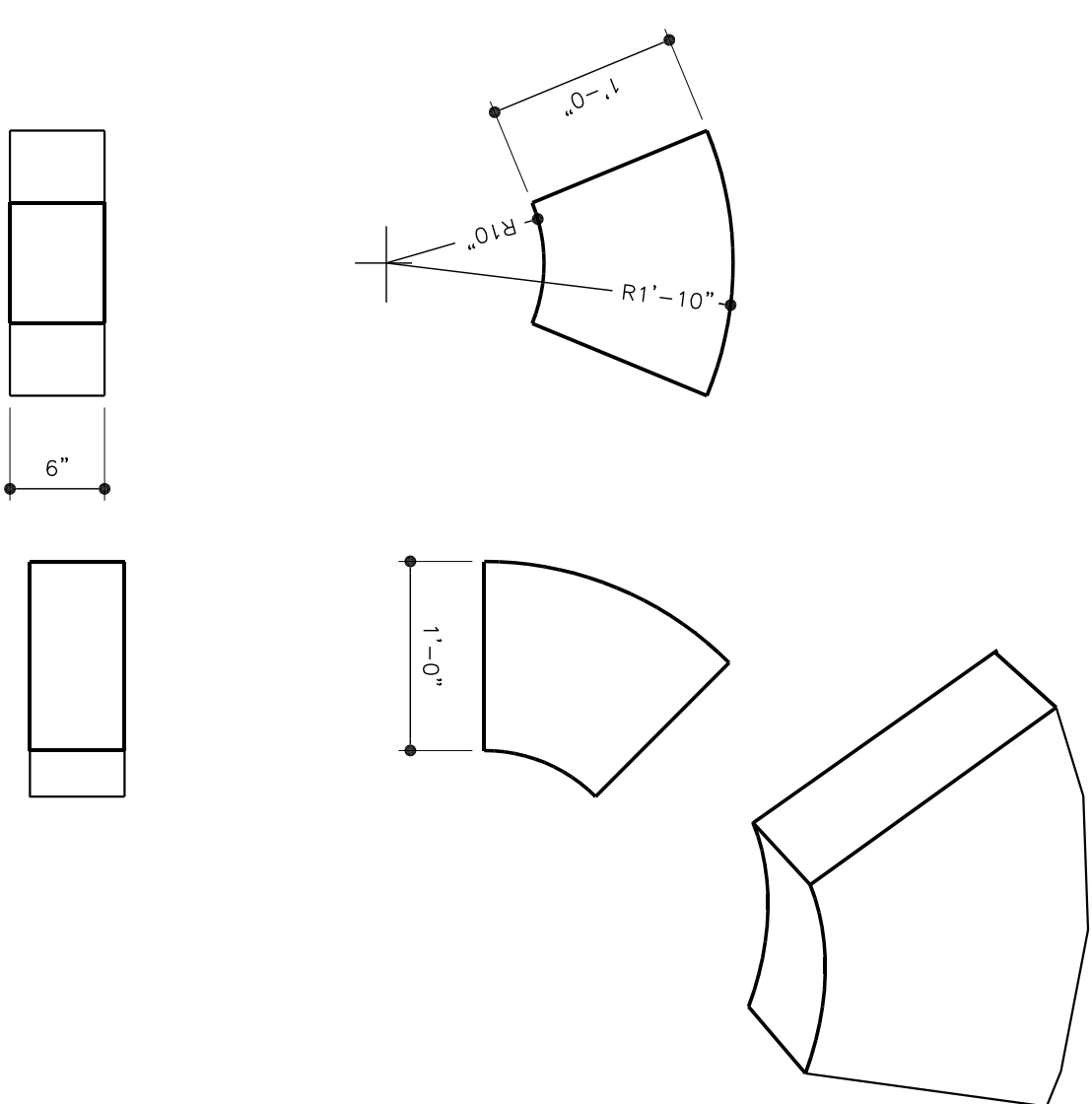
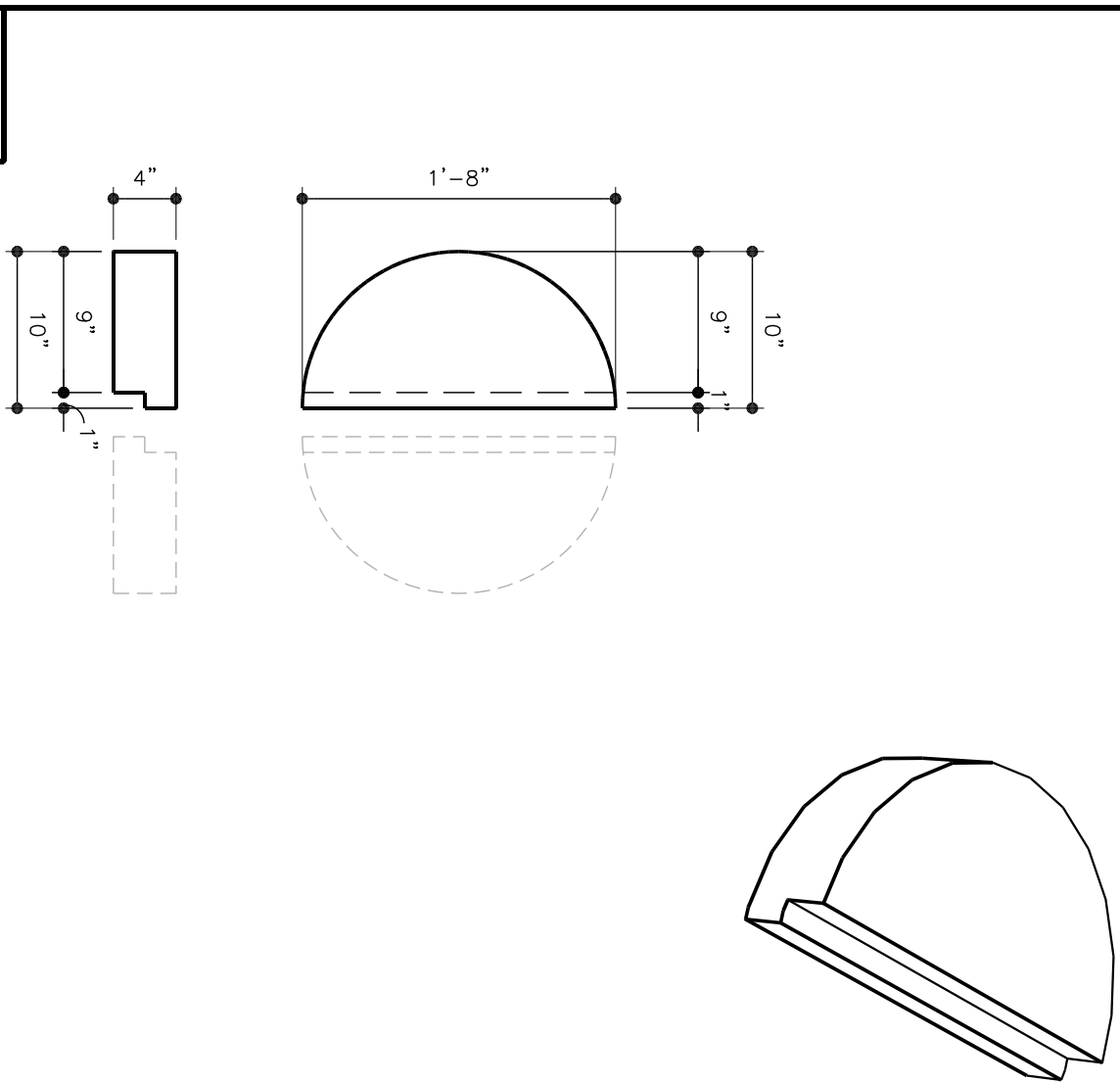
**Fax: 888.886.3473**

MANUFACTURING:  
3620 AVENUE C  
FAIRFIELD, AL 35064

ADMINISTRATIVE:  
1500 1st AVENUE N, #75  
BIRMINGHAM, AL 35203



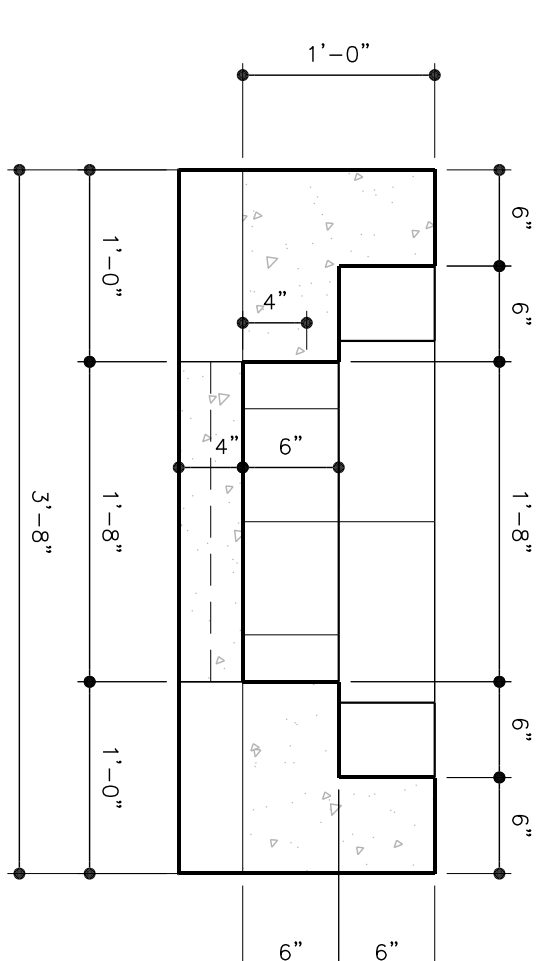
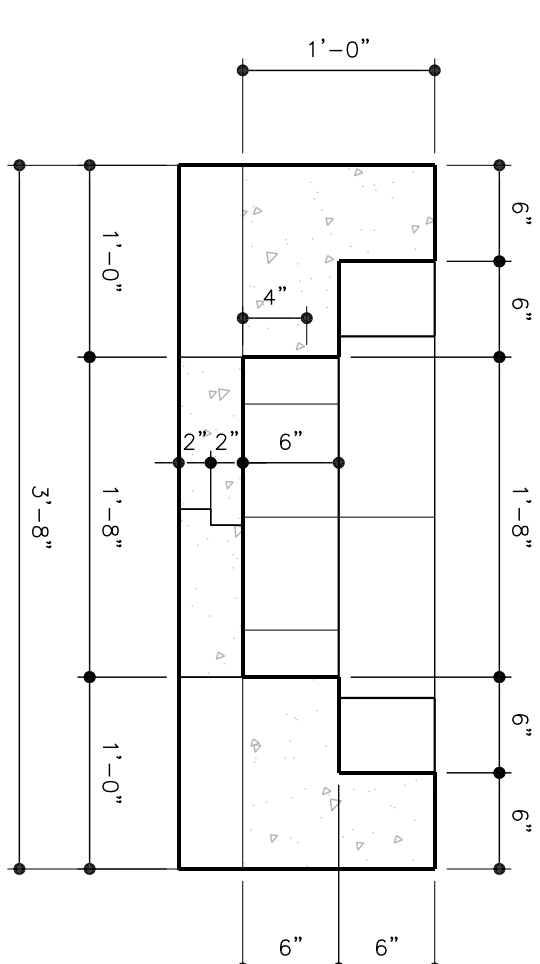
#	COMPONENT NAME
1	BASE PLATE
2	INTERMEDIATE BLOCK
3	UNIT BLOCK



# ISOMETRIC

# PLAN

SCALE: 1" = 1'-0"



# SECTION A-A

SCALE: 1" = 1'-0"

## SECTION B-B

SCALE: 1" = 1'-0"

RELEASE DATE

01/19/12

**1" = 1'-0"**

# SHEET

# FRP-RND